

Broil King®

2019 Collection





OFF / ARRÊT / CIERRE



POW-R-ZONE



OFF / ARRÊT / CIERRE



OFF / ARRÊT / CIERRE

OFF / ARRÊT / CIERRE



POW-R-ZONE



OFF / ARRÊT / CIERRE



POW-R-ZONE





Content

Performance Grilling Technology.....	2
Infrared Grilling System.....	4
Made for Steak.....	6
Imperial™ Series.....	8
Regal™ Series.....	14
Regal™ Commercial Series.....	24
Baron™ Series.....	30
Sovereign™ Series.....	40
Signet™ Series.....	46
Monarch™ Series.....	52
Gem™ 320.....	58
Porta-Chef™ Series.....	62
Keg Series.....	72
Pellet™ Grill Series.....	78
Smoke™ Grill Series.....	88
Smoke™ Cabinet Series.....	94
Premium Accessories.....	100
2019 Broil King® Grill Collection.....	124



Great Barbecue Flavor.

Every Broil King® gas grill is built to provide unparalleled barbecue flavor. Broil King's Performance Grilling Technology (PGT) gives you the ability to cook almost anything on your grill in any style you desire. You can sear steaks to perfection, rotisserie cook poultry or roasts, and even bake elaborate desserts. Every part of the cooking system is designed and engineered for a specific purpose – to deliver great barbecue flavor. When combined, the results are simply spectacular. There's no mistaking the great flavor you get with Broil King®.





Amazing Heat Retention

Made from die-cast aluminum and high-grade stainless steel, these durable double-walled cook boxes provide excellent heat retention and long lasting durability. The cook box is designed to ensure even-heat and heat retention for precise control.



Perfect Steakhouse Sear Marks

All Broil King® cooking grids deliver excellent heat retention and exceptional searing power to lock in juices and flavor. The heavy cast grids have two sides: one side is pointed for those perfect steakhouse sear marks while the other side has grooves for continuous basting. Thick, stainless steel rods are very easy to clean and provide long lasting durability.



Incredible Flavor

The stainless steel Flav-R-Wave™ cooking system provides superior heat distribution across the entire surface of the grill while protecting the burners. Drippings that fall onto the Flav-R-Wave™ are instantly vaporized. Vapor created through this process infuses into your food for unmistakable barbecue flavor.



Unmatched Performance

Broil King®'s patented Dual-Tube™ burners are made from high quality, heavy-duty stainless steel. These large diameter, tube-in-tube side-ported burners provide even heat distribution with two rows of flame per burner.



Perfect Temperature

Linear-Flow™ valves with 180 degree Sensi-Touch™ control knobs give you infinite heat control allowing you to set your grill to the perfect temperature for searing, roasting, or slow cooking.

Simply Radiant.



A close-up photograph of a Broil King infrared side burner. The burner is a dark, rectangular ceramic tile with a grid of small, glowing holes. A bright orange flame is visible through the grid, and the surrounding metal frame is dark and industrial. The text "Infrared. Searing Supernova" is overlaid on the right side of the image.

Infrared.

Searing Supernova

Broil King's Infrared side burner technology gives you the ability to sear and grill delicious foods quickly and efficiently.

The infrared burner is designed to focus the gas flame onto the ceramic tile comprised of thousands of microscopic holes. This converts the heat of the flame into infrared energy. With temperatures up to 1,700°F, it's like having the power of the sun in your side burner.

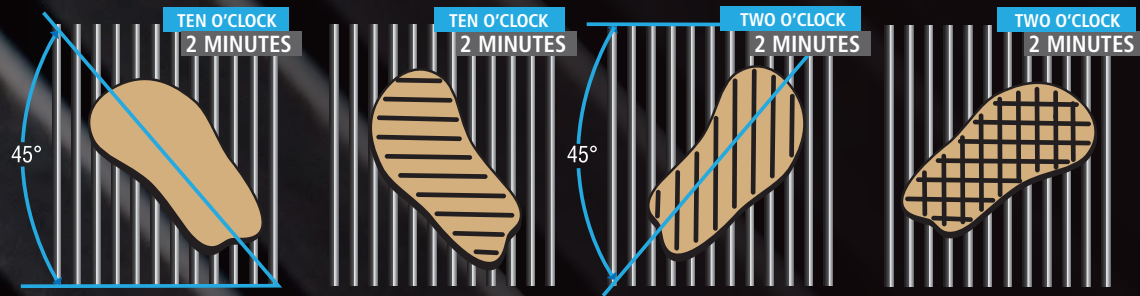
Broil King® has created a premium "Infrared Grilling System" including a **professional-grade stainless steel cooking grid.**

Infrared Technology is more fuel efficient, achieves much higher grill surface temperatures, and is superior for direct grilling. It's a great addition to Broil King's legendary performance.



Made for Steak.

Engineered for everything else.



The perfect steak 1 inch thick | medium rare



Luxury.

The Imperial™ Series

Broil King® takes luxury and performance to a whole new level. Light up the night with control knobs and oven lights to create ambiance at your next outdoor get together. Crafted from durable North American steel, the exterior assertively states *professional cooking appliance*. The Broil King® Imperial™ series is a collection of luxurious grills made for professionals and the adventurous outdoor chef.



IMPERIAL™ STANDARD FEATURES

SIDE BURNER	10,000 BTU commercial-grade side burner
ROTISSERIE BURNER	15,000 BTU stainless steel rear rotisserie burner and premium rotisserie kit
COOKING GRIDS	Professional cast stainless steel cooking grids
FLAVOR SYSTEM	304 stainless steel Flav-R-Wave™ cooking system
HEAT CONTROL	Linear-Flow™ valves with 180° Sensi-Touch™ control
THERMOMETER	Deluxe Accu-Temp™ thermometer(s)
IGNITION	Sure-Lite™ electronic ignition system
COOK BOX	304 stainless steel cook box with cast aluminum end caps
LID DESIGN	Roll-action lid(s) with cast aluminum end caps
SIDE SHELVES	304 stainless steel side shelves with one pull-out drawer
HANDLES	Stylish and durable stainless steel handles
CASTERS	Large 3-in / 7.6 cm locking casters with Level Q™ leg levelers located on the front casters
CONSTRUCTION	Rust resistant zinc coated steel components
FINISH	Premium powder-coat paint finish on cabinet and base
TANK DRAWER	Propane models have a pull-out tank drawer for easy changes
BUILT-IN LIGHTS	Built-in lights located in the cook box and control knobs
ELECTRICAL	Rear mounted dual outlet power bar for rotisserie and other electrical appliances



IMPERIAL™ XLS FEATURES

PERFORMANCE	60,000 BTU main burner output
BURNERS	Six stainless steel Dual-Tube™ burners
COOK BOX	Two completely separate cook boxes
TOTAL COOK SPACE	1,030 sq-in / 6,645 sq cm total cooking space including two porcelain coated warming racks
LARGE COOK BOX	500 sq-in / 3,225 sq cm primary large cook box
SMALL COOK BOX	250 sq-in / 1,613 sq cm primary small cook box
COOK BOX LIDS	Two durable stainless steel lids
CABINET AND LID	Rigid steel cabinet with stainless steel doors, drawers, and lids



IMPERIAL™ XL FEATURES

PERFORMANCE	60,000 BTU main burner output
BURNERS	Six stainless steel Dual-Tube™ burners
COOK BOX	Two completely separate cook boxes
TOTAL COOK SPACE	1,030 sq-in / 6,645 sq cm total cooking space including two porcelain coated warming racks
LARGE COOK BOX	500 sq-in / 3,225 sq cm primary large cook box
SMALL COOK BOX	250 sq-in / 1,613 sq cm primary small cook box
COOK BOX LIDS	Two durable porcelain enameled lids
CABINET AND LID	Rigid steel cabinet with black powder coat painted doors and porcelain enameled lids



IMPERIAL™ 590 FEATURES

PERFORMANCE	55,000 BTU main burner output
BURNERS	Five stainless steel Dual-Tube™ burners
TOTAL COOK SPACE	875 sq-in / 5,645 sq cm total cooking space including porcelain coated warming rack
PRIMARY COOK SPACE	625 sq-in / 4,032 sq cm primary cooking space
COOK BOX LID	One durable stainless steel lid
CABINET AND LID	Rigid steel cabinet with stainless steel door, drawers, and lid

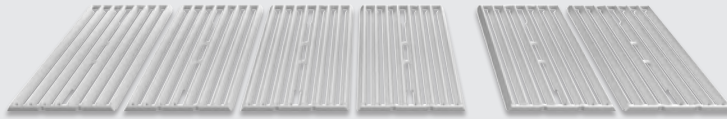
IMPERIAL™ XL | 1,030 SQ-IN TOTAL GRILLING AREA

PORCELAIN-COATED STEEL WARMING RACK - 280 SQ INCHES



CAST STAINLESS GRIDS - 500 SQ INCHES

250 SQ INCHES

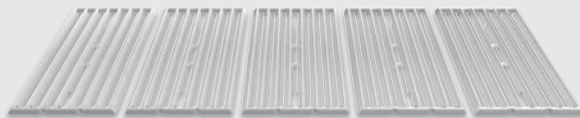


IMPERIAL™ 590 | 875 SQ-IN TOTAL GRILLING AREA

PORCELAIN-COATED STEEL WARMING RACK - 250 SQ INCHES



CAST STAINLESS COOKING GRIDS - 625 SQ INCHES



CAST STAINLESS STEEL GRIDS



GROOVED SIDE



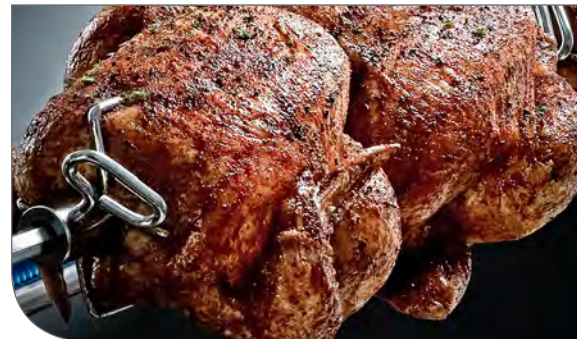
CAST IRON SIDE BURNER



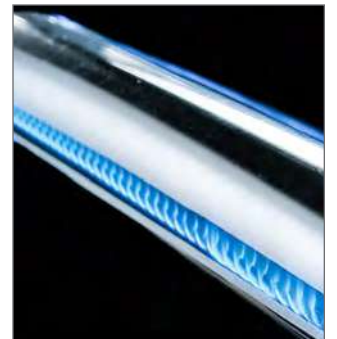
10,000 BTU



STAINLESS STEEL ROTISSERIE BURNER



15,000 BTU



304 STAINLESS STEEL COOK BOX



ELECTRONIC IGNITION



PULL-OUT TANK DRAWER



BUILT-IN DUAL-POWER OUTLET



LOCKING CASTERS WITH LEVEL Q™ LEVELERS



STORAGE DRAWERS



BUILT-IN OVEN LIGHTS



CONTROL KNOB LIGHTS



SIDE SHELF BINS AND TOOL HOOKS





Entertain.

The Regal™ Series

Entertaining your guests is what Broil King® specializes in. Broil King® Regal™ series is designed to help you create mouthwatering dishes that will surely be the hit of the party. Features that have made us an industry leader are apparent from the moment you see the fit and finish to when you experience the outstanding grilling performance. For the outdoor chef who lives to entertain; welcome to the Broil King® Regal™ series.



REGAL™ PRO STANDARD FEATURES

ROTISSERIE BURNER	15,000 BTU stainless steel rear rotisserie burner and premium rotisserie kit
COOKING GRIDS	Solid 9mm stainless steel cooking grids
FLAVOR SYSTEM	304 stainless steel Flav-R-Wave™ cooking system
HEAT CONTROL	Linear-Flow™ valves with 180° Sensi-Touch™ control
THERMOMETER	Deluxe Accu-Temp™ thermometer(s)
IGNITION	Sure-Lite™ electronic ignition system
COOK BOX	304 stainless steel cook box with cast aluminum end caps
LID DESIGN	Roll-action lid(s) with cast aluminum end caps
SIDE SHELVES	304 stainless steel side shelves
HANDLES	Stylish and durable stainless steel handles
CASTERS	Large 3-in / 7.6 cm locking casters with Level Q™ leg levelers located on the front casters
CONSTRUCTION	Rust resistant zinc coated steel components
FINISH	Premium powder-coat paint finish on cabinet and base
TANK DRAWER	Propane models have a pull-out tank drawer for easy changes
BUILT-IN LIGHTS	Built-in control knob lights



REGAL™ XLS PRO FEATURES

PERFORMANCE	60,000 BTU main burner output
BURNERS	Six stainless steel Dual-Tube™ burners
SIDE BURNER	10,000 BTU commercial-grade side burner
COOK BOX	Two completely separate cook boxes
TOTAL COOK SPACE	1,030 sq-in / 6,645 sq cm total cooking space including two porcelain coated warming racks
LARGE COOK BOX	500 sq-in / 3,225 sq cm primary large cook box
SMALL COOK BOX	250 sq-in / 1,613 sq cm primary small cook box
CABINET AND LID	Rigid steel cabinet with stainless steel doors and lids



REGAL™ XL PRO FEATURES

PERFORMANCE	60,000 BTU main burner output
BURNERS	Six stainless steel Dual-Tube™ burners
SIDE BURNER	10,000 BTU commercial-grade side burner
COOK BOX	Two completely separate cook boxes
TOTAL COOK SPACE	1,030 sq-in / 6,645 sq cm total cooking space including two porcelain coated warming racks
LARGE COOK BOX	500 sq-in / 3,225 sq cm primary large cook box
SMALL COOK BOX	250 sq-in / 1,613 sq cm primary small cook box
CABINET AND LID	Rigid steel cabinet with black powder coat painted doors and porcelain enameled lids



REGAL™ S590 PRO FEATURES

PERFORMANCE	55,000 BTU main burner output
BURNERS	Five stainless steel Dual-Tube™ burners
SIDE BURNER	10,000 BTU commercial-grade side burner
TOTAL COOK SPACE	875 sq-in / 5,645 sq cm total cooking space including porcelain coated warming rack
PRIMARY COOK SPACE	625 sq-in / 4,032 sq cm primary cooking space
CABINET AND LID	Rigid steel cabinet with stainless steel doors and lid

REGAL™ S590 PRO IR
COMES WITH AN
INFRARED SIDE BURNER



REGAL™ S590 PRO IR

SIDE BURNER	Infrared side burner with solid 9 mm stainless steel cooking grid
TOTAL COOK SPACE	995 sq-in / 6,419 sq cm total cooking space including infrared cooking grid and warming rack

REGAL™ PRO STANDARD FEATURES

ROTISSERIE BURNER	15,000 BTU stainless steel rear rotisserie burner and premium rotisserie kit
COOKING GRIDS	Solid 9mm stainless steel cooking grids
FLAVOR SYSTEM	304 stainless steel Flav-R-Wave™ cooking system
HEAT CONTROL	Linear-Flow™ valves with 180° Sensi-Touch™ control
THERMOMETER	Deluxe Accu-Temp™ thermometer(s)
IGNITION	Sure-Lite™ electronic ignition system
COOK BOX	304 stainless steel cook box with cast aluminum end caps
LID DESIGN	Roll-action lid(s) with cast aluminum end caps
SIDE SHELVES	304 stainless steel side shelves
HANDLES	Stylish and durable stainless steel handles
CASTERS	Large 3-in / 7.6 cm locking casters with Level Q™ leg levelers located on the front casters
CONSTRUCTION	Rust resistant zinc coated steel components
FINISH	Premium powder-coat paint finish on cabinet and base
TANK DRAWER	Propane models have a pull-out tank drawer for easy changes
BUILT-IN LIGHTS	Built-in control knob lights



REGAL™ 590 PRO FEATURES

PERFORMANCE	55,000 BTU main burner output
BURNERS	Five stainless steel Dual-Tube™ burners
SIDE BURNER	10,000 BTU commercial-grade side burner
TOTAL COOK SPACE	875 sq-in / 5,645 sq cm total cooking space including porcelain coated warming rack
PRIMARY COOK SPACE	625 sq-in / 4,032 sq cm primary cooking space
CABINET AND LID	Rigid steel cabinet with black powder coat painted doors and porcelain enameled lid



REGAL™ S490 PRO FEATURES

PERFORMANCE	50,000 BTU main burner output
BURNERS	Four stainless steel Dual-Tube™ burners
SIDE BURNER	10,000 BTU commercial-grade side burner
TOTAL COOK SPACE	695 sq-in / 4,484 sq cm total cooking space including porcelain coated warming rack
PRIMARY COOK SPACE	500 sq-in / 3,226 sq cm primary cooking space
CABINET AND LID	Rigid steel cabinet with stainless steel doors and lid



REGAL™ 490 PRO FEATURES

PERFORMANCE	50,000 BTU main burner output
BURNERS	Four stainless steel Dual-Tube™ burners
SIDE BURNER	10,000 BTU commercial-grade side burner
TOTAL COOK SPACE	695 sq-in / 4,484 sq cm total cooking space including porcelain coated warming rack
PRIMARY COOK SPACE	500 sq-in / 3,226 sq cm primary cooking space
CABINET AND LID	Rigid steel cabinet with black powder coat painted doors and porcelain enameled lid

REGAL™ S490 PRO IR
COMES WITH AN
INFRARED SIDE BURNER



REGAL™ S490 PRO IR

SIDE BURNER	Infrared side burner with solid 9 mm stainless steel cooking grid
TOTAL COOK SPACE	815 sq-in / 5,258 sq cm total cooking space including infrared cooking grid and warming rack

REGAL™ PRO STANDARD FEATURES

COOKING GRIDS	Solid 9mm stainless steel cooking grids
FLAVOR SYSTEM	304 stainless steel Flav-R-Wave™ cooking system
HEAT CONTROL	Linear-Flow™ valves with 180° Sensi-Touch™ control
THERMOMETER	Deluxe Accu-Temp™ thermometer(s)
IGNITION	Sure-Lite™ electronic ignition system
COOK BOX	304 stainless steel cook box with cast aluminum end caps
LID DESIGN	Roll-action lid(s) with cast aluminum end caps
SIDE SHELVES	304 stainless steel side shelves
HANDLES	Stylish and durable stainless steel handles
CASTERS	Large 3-in / 7.6 cm locking casters with Level Q™ leg levelers located on the front casters
CONSTRUCTION	Rust resistant zinc coated steel components
FINISH	Premium powder-coat paint finish on cabinet and base
TANK DRAWER	Propane models have a pull-out tank drawer for easy changes
BUILT-IN LIGHTS	Built-in control knob lights



REGAL™ S420 PRO FEATURES

PERFORMANCE	50,000 BTU main burner output
BURNERS	Four stainless steel Dual-Tube™ burners
TOTAL COOK SPACE	695 sq-in / 4,484 sq cm total cooking space including porcelain coated warming rack
PRIMARY COOK SPACE	500 sq-in / 3,226 sq cm primary cooking space
CABINET AND LID	Rigid steel cabinet with stainless steel doors and lid





REGAL™ 420 PRO FEATURES

PERFORMANCE	50,000 BTU main burner output
BURNERS	Four stainless steel Dual-Tube™ burners
TOTAL COOK SPACE	695 sq-in / 4,484 sq cm total cooking space including porcelain coated warming rack
PRIMARY COOK SPACE	500 sq-in / 3,226 sq cm primary cooking space
CABINET AND LID	Rigid steel cabinet with black powder coat painted doors and porcelain enameled lid



REGAL™ XL | 1,030 SQ-IN TOTAL GRILLING AREA

PORCELAIN-COATED STEEL WARMING RACK - 280 SQ INCHES



STAINLESS GRIDS - 500 SQ INCHES

CAST GRIDS - 250 SQ INCHES



REGAL™ 590 | 875 SQ-IN TOTAL GRILLING AREA

PORCELAIN-COATED STEEL WARMING RACK - 250 SQ INCHES



120 SQ INCHES
IR GRID

STAINLESS STEEL COOKING GRIDS - 625 SQ INCHES



REGAL™ 400 | 695 SQ-IN TOTAL GRILLING AREA

PORCELAIN-COATED STEEL WARMING RACK - 195 SQ INCHES



120 SQ INCHES
IR GRID

STAINLESS STEEL COOKING GRIDS - 500 SQ INCHES



STAINLESS STEEL GRIDS

9MM THICK



CAST IRON SIDE BURNER

10,000 BTU



STAINLESS STEEL ROTISSERIE BURNER

15,000 BTU



304 STAINLESS STEEL COOK BOX



ELECTRONIC IGNITION



PULL-OUT TANK DRAWER



TOOL HOOKS



LOCKING CASTERS WITH LEVEL Q™ LEVELERS



STORAGE SHELF



STAINLESS STEEL HANDLES



SIDE SHELF BINS



CONTROL KNOB LIGHTS





Performance.

The Regal™ Commercial Series

The Broil King® Regal™ Commercial series is perfect for golf courses and large banquet events. These premium, heavy-duty “workhorse” grills are designed for performance, durability and exceptional results. The durable 304 stainless steel exterior provides a commercial-grade look but the real success lies in the renowned performance cooking system. With patented stainless steel Dual-Tube™ burners, a durable 304 stainless steel cook box, and 9mm cooking grids, you’ll have the confidence that these grilling machines are ready to sear the perfect steak and anything else you can dream of throwing on it.



REGAL™ COMMERCIAL STANDARD FEATURES

COOKING GRIDS	Solid 9mm stainless steel cooking grids
FLAVOR SYSTEM	304 stainless steel Flav-R-Wave™ cooking system
HEAT CONTROL	Linear-Flow™ valves with 180° Sensi-Touch™ control
THERMOMETER	Deluxe Accu-Temp™ thermometer(s)
IGNITION	Sure-Lite™ electronic ignition system
COOK BOX	304 stainless steel cook box with cast aluminum end caps
LID DESIGN	Roll-action lid with cast aluminum end caps
SIDE SHELVES	304 stainless steel side shelves
HANDLE	Stylish and durable stainless steel handle
CASTERS	Large commercial-grade locking casters
WHEELS	Two large 7.5-in / 19 cm rubber coated all-terrain wheels
CONSTRUCTION	304 stainless steel on cart and base
COMPONENTS	Rust resistant zinc coated steel components
TANK HOLDER	Rigid 304 stainless steel tank bracket for easy changes



REGAL™ S520 C FEATURES

PERFORMANCE	55,000 BTU main burner output
BURNERS	Five stainless steel Dual-Tube™ burners
TOTAL COOK SPACE	875 sq-in / 5,645 sq cm total cooking space including porcelain coated warming rack
PRIMARY COOK SPACE	625 sq-in / 4,032 sq cm primary cooking space





REGAL™ S420 C FEATURES

PERFORMANCE	50,000 BTU main burner output
BURNERS	Four stainless steel Dual-Tube™ burners
TOTAL COOK SPACE	695 sq-in / 4,484 sq cm total cooking space including porcelain coated warming rack
PRIMARY COOK SPACE	500 sq-in / 3,226 sq cm primary cooking space



REGAL™ 520 | 875 SQ-IN TOTAL GRILLING AREA

PORCELAIN-COATED STEEL WARMING RACK - 250 SQ INCHES



STAINLESS STEEL COOKING GRIDS - 625 SQ INCHES



REGAL™ 420 | 695 SQ-IN TOTAL GRILLING AREA

PORCELAIN-COATED STEEL WARMING RACK - 195 SQ INCHES



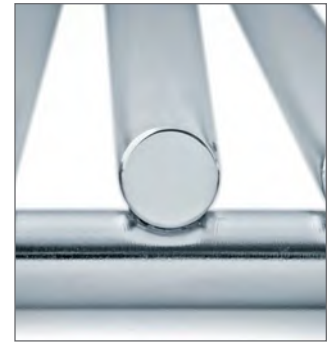
STAINLESS STEEL COOKING GRIDS - 500 SQ INCHES



STAINLESS STEEL GRIDS



9MM THICK



STAINLESS STEEL DUAL-TUBE™ BURNERS



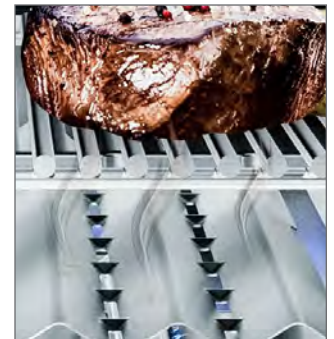
DUAL-FLAME



STAINLESS STEEL FLAV-R-WAVE™



INFUSES GREAT FLAVOR



304 STAINLESS STEEL COOK BOX



ELECTRONIC IGNITION



PROPANE TANK BRACKET



TOOL HOOKS AND SHELF BINS



COMMERCIAL-GRADE LOCKING CASTERS



DURABLE STAINLESS STEEL SHELVES



STAINLESS STEEL HANDLES



HIGH-CAPACITY GREASE TRAY



DURABLE ALL-TERRAIN WHEELS





Everyday.

The Baron™ Series

The Broil King® Baron™ series offers power and performance in a variety of sizes for the everyday griller. The exterior of the grill boasts urban styling and the performance rivals any other grill. The Baron™ series is truly in a class by itself.



BARON™ STANDARD FEATURES

ROTISSERIE BURNER	15,000 BTU stainless steel rear rotisserie burner and premium rotisserie kit
COOKING GRIDS	Heavy-duty cast iron cooking grids
FLAVOR SYSTEM	Stainless steel Flav-R-Wave™ cooking system
HEAT CONTROL	Linear-Flow™ valves with 180° Sensi-Touch™ control
THERMOMETER	Deluxe Accu-Temp™ thermometer
IGNITION	Sure-Lite™ electronic ignition system
COOK BOX	Stainless steel cook box with cast aluminum end caps
LID DESIGN	Double-walled lid with cast aluminum end caps
SIDE SHELVES	Stainless steel drop-down side shelves
HANDLES	Stylish and durable stainless steel handles
CASTERS	Large 3-in / 7.6 cm locking casters with Level Q™ leg levelers located on the front casters
CONSTRUCTION	Rust resistant zinc coated steel components
FINISH	Premium powder-coat paint finish on cabinet and base

BARON™ PRO STANDARD FEATURE

COOKING GRIDS	Solid 8mm stainless steel cooking grids
---------------	---



BARON™ S590 FEATURES

PERFORMANCE	50,000 BTU main burner output
BURNERS	Five stainless steel Dual-Tube™ burners
SIDE BURNER	10,000 BTU stainless steel side burner
TOTAL COOK SPACE	805 sq-in / 5,194 sq cm total cooking space including porcelain coated warming rack
PRIMARY COOK SPACE	555 sq-in / 3,581 sq cm primary cooking space
CABINET AND LID	Rigid steel cabinet with stainless steel doors and lid

BARON™ S590 PRO IR

SIDE BURNER	Infrared side burner with solid 8 mm stainless steel cooking grid
TOTAL COOK SPACE	925 sq-in / 5,967 sq cm total cooking space including infrared cooking grid and warming rack

BARON™ S590 PRO IR
COMES WITH AN
INFRARED SIDE BURNER





BARON™ 590 FEATURES

PERFORMANCE	50,000 BTU main burner output
BURNERS	Five stainless steel Dual-Tube™ burners
SIDE BURNER	10,000 BTU stainless steel side burner
TOTAL COOK SPACE	805 sq-in / 5,194 sq cm total cooking space including porcelain coated warming rack
PRIMARY COOK SPACE	555 sq-in / 3,581 sq cm primary cooking space
CABINET AND LID	Rigid steel cabinet with black powder coat painted doors and porcelain enameled lid



BARON™ S490 FEATURES

PERFORMANCE	40,000 BTU main burner output
BURNERS	Four stainless steel Dual-Tube™ burners
SIDE BURNER	10,000 BTU stainless steel side burner
TOTAL COOK SPACE	644 sq-in / 4,155 sq cm total cooking space including porcelain coated warming rack
PRIMARY COOK SPACE	444 sq-in / 2,865 sq cm primary cooking space
CABINET AND LID	Rigid steel cabinet with stainless steel doors and lid

BARON™ S490 PRO IR
COMES WITH AN
INFRARED SIDE BURNER



BARON™ S490 PRO IR

SIDE BURNER	Infrared side burner with solid 8 mm stainless steel cooking grid
TOTAL COOK SPACE	764 sq-in / 4,929 sq cm total cooking space including infrared cooking grid and warming rack

BARON™ STANDARD FEATURES

COOKING GRIDS	Heavy-duty cast iron cooking grids
FLAVOR SYSTEM	Stainless steel Flav-R-Wave™ cooking system
HEAT CONTROL	Linear-Flow™ valves with 180° Sensi-Touch™ control
THERMOMETER	Deluxe Accu-Temp™ thermometer
IGNITION	Sure-Lite™ electronic ignition system
COOK BOX	Stainless steel cook box with cast aluminum end caps
LID DESIGN	Double-walled lid with cast aluminum end caps
SIDE SHELVES	Stainless steel drop-down side shelves
HANDLES	Stylish and durable stainless steel handles
CASTERS	Large 3-in / 7.6 cm locking casters with Level Q™ leg levelers located on the front casters
CONSTRUCTION	Rust resistant zinc coated steel components
FINISH	Premium powder-coat paint finish on cabinet and base



BARON™ 490 FEATURES

PERFORMANCE	40,000 BTU main burner output
BURNERS	Four stainless steel Dual-Tube™ burners
SIDE BURNER	10,000 BTU stainless steel side burner
ROTISSERIE BURNER	15,000 BTU stainless steel rear rotisserie burner and premium rotisserie kit
TOTAL COOK SPACE	644 sq-in / 4,155 sq cm total cooking space including porcelain coated warming rack
PRIMARY COOK SPACE	444 sq-in / 2,865 sq cm primary cooking space
CABINET AND LID	Rigid steel cabinet with black powder coat painted doors and porcelain enameled lid





BARON™ S440 FEATURES

PERFORMANCE	40,000 BTU main burner output
BURNERS	Four stainless steel Dual-Tube™ burners
SIDE BURNER	10,000 BTU stainless steel side burner
TOTAL COOK SPACE	644 sq-in / 4,155 sq cm total cooking space including porcelain coated warming rack
PRIMARY COOK SPACE	444 sq-in / 2,865 sq cm primary cooking space
CABINET AND LID	Rigid steel cabinet with stainless steel doors and lid



BARON™ 440 FEATURES

PERFORMANCE	40,000 BTU main burner output
BURNERS	Four stainless steel Dual-Tube™ burners
SIDE BURNER	10,000 BTU stainless steel side burner
TOTAL COOK SPACE	644 sq-in / 4,155 sq cm total cooking space including porcelain coated warming rack
PRIMARY COOK SPACE	444 sq-in / 2,865 sq cm primary cooking space
CABINET AND LID	Rigid steel cabinet with black powder coat painted doors and porcelain enameled lid

BARON™ STANDARD FEATURES

COOKING GRIDS	Heavy-duty cast iron cooking grids
FLAVOR SYSTEM	Stainless steel Flav-R-Wave™ cooking system
HEAT CONTROL	Linear-Flow™ valves with 180° Sensi-Touch™ control
THERMOMETER	Deluxe Accu-Temp™ thermometer
IGNITION	Sure-Lite™ electronic ignition system
COOK BOX	Stainless steel cook box with cast aluminum end caps
LID DESIGN	Double-walled lid with cast aluminum end caps
SIDE SHELVES	Stainless steel drop-down side shelves
HANDLES	Stylish and durable stainless steel handles
CASTERS	Large 3-in / 7.6 cm locking casters with Level Q™ leg levelers located on the front casters
CONSTRUCTION	Rust resistant zinc coated steel components
FINISH	Premium powder-coat paint finish on cabinet and base



BARON™ 420 FEATURES

PERFORMANCE	40,000 BTU main burner output
BURNERS	Four stainless steel Dual-Tube™ burners
TOTAL COOK SPACE	644 sq-in / 4,155 sq cm total cooking space including porcelain coated warming rack
PRIMARY COOK SPACE	444 sq-in / 2,865 sq cm primary cooking space
CABINET AND LID	Rigid steel cabinet with stainless steel doors and lid





BARON™ S420 FEATURES

PERFORMANCE	40,000 BTU main burner output
BURNERS	Four stainless steel Dual-Tube™ burners
TOTAL COOK SPACE	644 sq-in / 4,155 sq cm total cooking space including porcelain coated warming rack
PRIMARY COOK SPACE	444 sq-in / 2,865 sq cm primary cooking space
CABINET AND LID	Rigid steel cabinet with black powder coat painted doors and porcelain enameled lid



BARON™ 320

BARON™ S320 FEATURES

PERFORMANCE	30,000 BTU main burner output
BURNERS	Three stainless steel Dual-Tube™ burners
TOTAL COOK SPACE	440 sq-in / 2,839 sq cm total cooking space including porcelain coated warming rack
PRIMARY COOK SPACE	330 sq-in / 2,129 sq cm primary cooking space
CABINET AND LID	Rigid steel cabinet with stainless steel door and lid

BARON™ 320 FEATURES

CABINET AND LID	Rigid steel cabinet with black powder coat painted door and porcelain enameled lid
-----------------	--

BARON™ 590 | 805 SQ-IN TOTAL GRILLING AREA

PORCELAIN-COATED STEEL WARMING RACK - 250 SQ INCHES



CAST IRON COOKING GRIDS - 555 SQ INCHES



120 SQ INCHES
IR GRID



BARON™ 400 | 644 SQ-IN TOTAL GRILLING AREA

PORCELAIN-COATED STEEL WARMING RACK - 200 SQ INCHES



CAST IRON COOKING GRIDS - 444 SQ INCHES



120 SQ INCHES
IR GRID

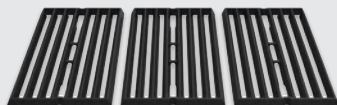


BARON™ 300 | 440 SQ-IN TOTAL GRILLING AREA

PORCELAIN-COATED STEEL WARMING RACK - 110 SQ INCHES



CAST IRON COOKING GRIDS - 330 SQ INCHES



CAST IRON GRIDS - TWO SIDED



GROOVED SIDE



STAINLESS STEEL SIDE BURNER



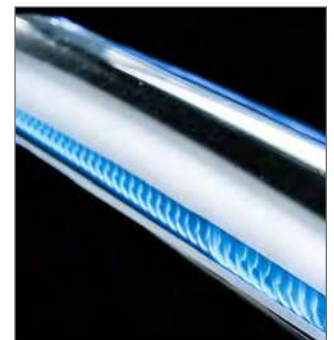
10,000 BTU



STAINLESS STEEL ROTISSERIE BURNER



15,000 BTU



STAINLESS STEEL COOK BOX



ELECTRONIC IGNITION



TANK HOLDER



TOOL HOOKS



LOCKING CASTERS WITH LEVEL Q™ LEVELERS



STAINLESS STEEL SIDE SHELVES



FOLD DOWN SHELVES



STAINLESS STEEL HANDLES



SLIDE-OUT DRIP TRAY





Signature.

The Sovereign™ Series

Known for its deep Therma-Cast™ aluminum oven and solid 9mm stainless steel cooking grids, the Broil King® Sovereign™ series provides superior heat retention and outstanding results. Available in both large and extra large sizes, these powerful gas grills are the ultimate outdoor companion. Proudly built in North America and built to last.



SOVEREIGN™ STANDARD FEATURES

COOKING GRIDS	Solid 9 mm stainless steel cooking grids
FLAVOR SYSTEM	Stainless steel Flav-R-Wave™ cooking system
HEAT CONTROL	Linear-Flow™ valves with 180° Sensi-Touch™ control
THERMOMETER	Deluxe Accu-Temp™ thermometer
IGNITION	Sure-Lite™ electronic ignition system
COOK BOX	Therma-Cast™ aluminum oven with stainless steel lid wrap
CABINET	Rigid steel cabinet with stainless steel doors
SIDE SHELVES	Stainless steel drop-down side shelves with tool hooks and condiment bins
HANDLE	Stylish and durable resin handle
CONSTRUCTION	Rust resistant zinc coated steel components
FINISH	Premium powder-coat paint finish on cabinet



SOVEREIGN™ XLS90 FEATURES

PERFORMANCE	50,000 BTU main burner output
BURNERS	Four stainless steel Dual-Tube™ burners
SIDE BURNER	10,000 BTU commercial-grade side burner
ROTISSERIE BURNER	18,000 BTU stainless steel rear rotisserie burner and premium rotisserie kit
TOTAL COOK SPACE	1,000 sq-in / 6,452 sq cm total cooking space including porcelain coated warming rack
PRIMARY COOK SPACE	600 sq-in / 3,871 sq cm primary cooking space
CASTERS	Two durable 3-in / 7.6 cm locking casters
WHEELS	Two large 8-in / 20.3 cm crack-proof wheels
CABINET BASE	Rigid steel base





SOVEREIGN™ XLS20 FEATURES

PERFORMANCE	50,000 BTU main burner output
BURNERS	Four stainless steel Dual-Tube™ burners
TOTAL COOK SPACE	1,000 sq-in / 6,452 sq cm total cooking space including porcelain coated warming rack
PRIMARY COOK SPACE	600 sq-in / 3,871 sq cm primary cooking space
CASTERS	Two durable 3-in / 7.6 cm locking casters
WHEELS	Two large 8-in / 20.3 cm crack-proof wheels
CABINET BASE	Rigid steel base



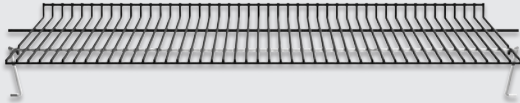
SOVEREIGN™ 20

SOVEREIGN™ 90 FEATURES

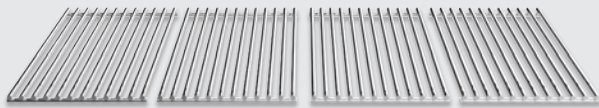
PERFORMANCE	44,000 BTU main burner output
BURNERS	Three stainless steel Dual-Tube™ burners
SIDE BURNER	10,000 BTU commercial-grade side burner
ROTISSERIE BURNER	15,000 BTU stainless steel rear rotisserie burner and premium rotisserie kit
TOTAL COOK SPACE	725 sq-in / 4,677 sq cm total cooking space including porcelain coated warming rack
PRIMARY COOK SPACE	450 sq-in / 2,903 sq cm primary cooking space
CASTERS	Two durable 2.5-in / 6.4 cm locking casters
WHEELS	Two large 7-in / 17.8 cm crack-proof wheels
CABINET BASE	Durable rust-proof resin base

SOVEREIGN™ XLS | 1,000 SQ-IN TOTAL GRILLING AREA

PORCELAIN-COATED STEEL WARMING RACK - 400 SQ INCHES

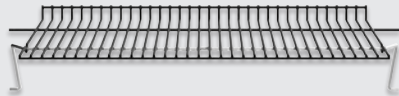


STAINLESS STEEL COOKING GRIDS - 600 SQ INCHES

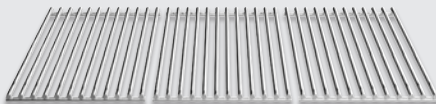


SOVEREIGN™ 90/20 | 725 SQ-IN TOTAL GRILLING AREA

PORCELAIN-COATED STEEL WARMING RACK - 275 SQ INCHES



STAINLESS STEEL COOKING GRIDS - 450 SQ INCHES



STAINLESS STEEL GRIDS

9MM THICK



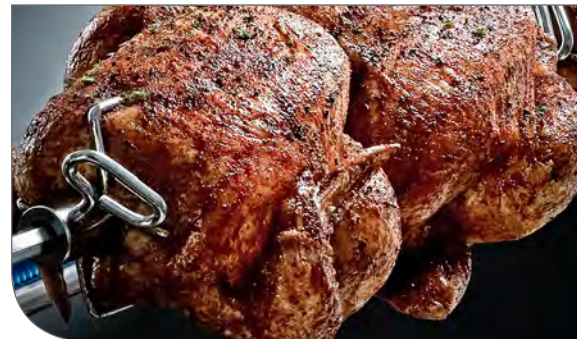
CAST IRON SIDE BURNER

10,000 BTU



STAINLESS STEEL ROTISSERIE BURNER

18,000 / 15,000 BTU



CAST ALUMINUM COOK BOX



ELECTRONIC IGNITION



TANK HOLDER



TOOL HOOKS



DURABLE RESIN WHEELS AND CASTERS



STAINLESS STEEL SIDE SHELVES



FOLD DOWN SHELVES



SENSI-TOUCH™ CONTROL KNOBS



SLIDE-OUT DRIP PAN





Classic.

The Signet™ Series

A true classic that has stood the test of time. The Broil King® Signet™ is one of our most popular gas grills and is trusted by grilling enthusiasts around the world for great results and great barbecues every time.



SIGNET™ STANDARD FEATURES

COOKING GRIDS	Heavy-duty cast iron cooking grids
FLAVOR SYSTEM	Stainless steel Flav-R-Wave™ cooking system
HEAT CONTROL	Linear-Flow™ valves with 180° Sensi-Touch™ control
THERMOMETER	Deluxe Accu-Temp™ thermometer
IGNITION	Sure-Lite™ electronic ignition system
COOK BOX	Therma-Cast™ aluminum oven with stainless steel or black lid wrap
CABINET	Rigid steel cabinet with stainless steel or black powder-coat doors
CABINET BASE	Durable rust-proof resin base
SIDE SHELVES	Stainless steel or black powder-coat drop-down side shelves with tool hooks (condiment bins on Signet™ 90 only)
LID HANDLE	Stylish and durable stainless steel handle
CASTERS	Two large 2.5-in / 6.4 cm locking casters
WHEELS	Two large 7-in / 17.8 cm crack-proof wheels
CONSTRUCTION	Rust resistant zinc coated steel components
FINISH	Premium powder-coat paint finish on cabinet



SIGNET™ 90 FEATURES

PERFORMANCE	40,000 BTU main burner output
BURNERS	Three stainless steel Dual-Tube™ burners
SIDE BURNER	10,000 BTU stainless steel side burner
ROTISSERIE BURNER	15,000 BTU stainless steel rear rotisserie burner and premium rotisserie kit
TOTAL COOK SPACE	635 sq-in / 4,097 sq cm total cooking space including porcelain coated warming rack
PRIMARY COOK SPACE	400 sq-in / 2,581 sq cm primary cooking space
FINISH	Stainless steel lid insert, shelves and doors





SIGNET™ 320 FEATURES

PERFORMANCE	40,000 BTU main burner output
BURNERS	Three stainless steel Dual-Tube™ burners
TOTAL COOK SPACE	635 sq-in / 4,097 sq cm total cooking space including porcelain coated warming rack
PRIMARY COOK SPACE	400 sq-in / 2,581 sq cm primary cooking space
FINISH	Stainless steel lid insert, shelves and doors



SIGNET™ 320 BLACK FEATURES

PERFORMANCE	40,000 BTU main burner output
BURNERS	Three stainless steel Dual-Tube™ burners
TOTAL COOK SPACE	635 sq-in / 4,097 sq cm total cooking space including porcelain coated warming rack
PRIMARY COOK SPACE	400 sq-in / 2,581 sq cm primary cooking space
FINISH	Black porcelain enameled lid insert with powder-coat finish on shelves and doors

SIGNET™ 300 | 635 SQ-IN TOTAL GRILLING AREA

PORCELAIN-COATED STEEL WARMING RACK - 235 SQ INCHES



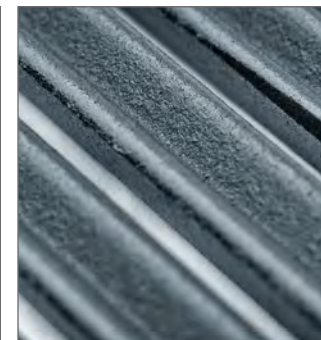
CAST IRON COOKING GRIDS - 400 SQ INCHES



CAST IRON GRIDS - TWO SIDED



GROOVED SIDE



STAINLESS STEEL SIDE BURNER



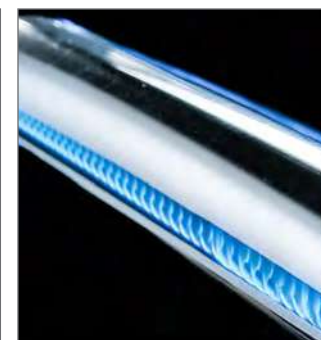
10,000 BTU



STAINLESS STEEL ROTISSERIE BURNER



15,000 BTU



CAST ALUMINUM COOK BOX



ELECTRONIC IGNITION



TANK HOLDER



TOOL HOOKS



DURABLE RESIN WHEELS AND CASTERS



STAINLESS STEEL SIDE SHELVES



FOLD DOWN SHELVES



SENSI-TOUCH™ CONTROL KNOBS



SLIDE-OUT DRIP TRAY





Style.

The Monarch™ Series

The compact Broil King® Monarch™ series is designed for smaller spaces on your deck or patio. Don't let the size fool you; this grill has Broil King®'s legendary PGT cooking system to deliver exceptional results.



MONARCH™ STANDARD FEATURES

COOKING GRIDS	Heavy-duty cast iron cooking grids
FLAVOR SYSTEM	Stainless steel Flav-R-Wave™ cooking system
HEAT CONTROL	Linear-Flow™ valves with 180° Sensi-Touch™ control
THERMOMETER	Deluxe Accu-Temp™ thermometer
IGNITION	Sure-Lite™ electronic ignition system
COOK BOX	Therma-Cast™ aluminum oven with stainless steel lid wrap
CABINET	Rigid steel cabinet with black painted steel door
CABINET BASE	Durable rust-proof resin base
SIDE SHELVES	Black painted steel drop-down side shelves with tool hooks
HANDLES	Stylish and durable stainless steel handles
CASTERS	Two large 2.5-in / 6.4 cm locking casters
WHEELS	Two large 7-in / 17.8 cm crack-proof wheels
CONSTRUCTION	Rust resistant zinc coated steel components
FINISH	Premium powder-coat paint finish on cabinet



MONARCH™ 390 FEATURES

PERFORMANCE	30,000 BTU main burner output
BURNERS	Three stainless steel Dual-Tube™ burners
SIDE BURNER	10,000 BTU stainless steel side burner
ROTISSERIE BURNER	12,000 BTU stainless steel rear rotisserie burner and premium rotisserie kit
TOTAL COOK SPACE	520 sq-in / 3,355 sq cm total cooking space including porcelain coated warming rack
PRIMARY COOK SPACE	350 sq-in / 2,258 sq cm primary cooking space



MONARCH™ 340 FEATURES

PERFORMANCE	30,000 BTU main burner output
BURNERS	Three stainless steel Dual-Tube™ burners
SIDE BURNER	10,000 BTU stainless steel side burner
TOTAL COOK SPACE	520 sq-in / 3,355 sq cm total cooking space including porcelain coated warming rack
PRIMARY COOK SPACE	350 sq-in / 2,258 sq cm primary cooking space

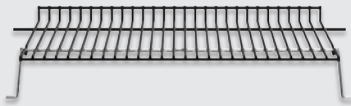


MONARCH™ 320 FEATURES

PERFORMANCE	30,000 BTU main burner output
BURNERS	Three stainless steel Dual-Tube™ burners
TOTAL COOK SPACE	520 sq-in / 3,355 sq cm total cooking space including porcelain coated warming rack
PRIMARY COOK SPACE	350 sq-in / 2,258 sq cm primary cooking space

MONARCH™ 300 | 520 SQ-IN TOTAL GRILLING AREA

PORCELAIN-COATED STEEL WARMING RACK - 170 SQ INCHES



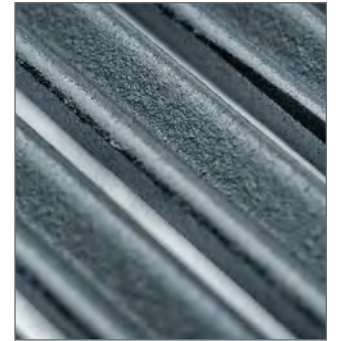
CAST IRON COOKING GRIDS - 350 SQ INCHES



CAST IRON GRIDS - TWO SIDED



GROOVED SIDE



STAINLESS STEEL SIDE BURNER



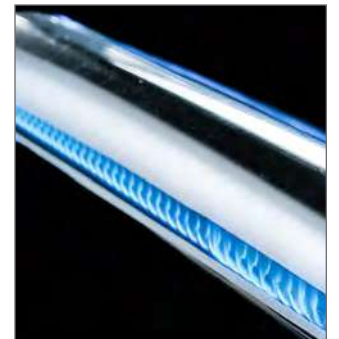
10,000 BTU



STAINLESS STEEL ROTISSERIE BURNER



12,000 BTU



CAST ALUMINUM COOK BOX



ELECTRONIC IGNITION



TANK HOLDER



TOOL HOOKS



DURABLE RESIN WHEELS AND CASTERS



DURABLE STEEL SIDE SHELVES



FOLD DOWN SHELVES



SENSI-TOUCH™ CONTROL KNOBS



SLIDE-OUT DRIP TRAY





Compact. The Gem™ 320

Broil King® has barbecues to fit any budget without sacrificing our exceptional quality. It's what sets the Broil King® Gem™ 320 apart from its rivals. This modern-looking grill features a rust-proof cast aluminum cook box for great heat retention, powerful side ported dual-flame tube burners for even heat distribution, and Linear-Flow™ valves for precise cooking control.



GEM™ 320 | 430 SQ-IN TOTAL GRILLING AREA

CHROME-COATED WARMING RACK - 135 SQ INCHES



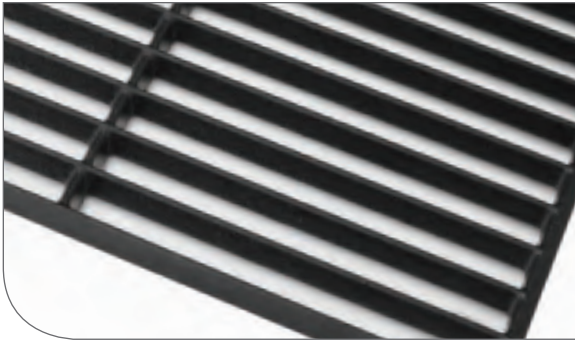
CAST IRON COOKING GRIDS - 295 SQ INCHES



GEM™ 320 FEATURES

PERFORMANCE	24,000 BTU main burner output
BURNERS	Three stainless steel tube burners
COOKING GRIDS	Cast iron cooking grids
FLAVOR SYSTEM	Stainless steel Flav-R-Wave™ cooking system
HEAT CONTROL	Linear-Flow™ valves with 180° control
TOTAL COOK SPACE	430 sq-in / 2,774 sq cm total cooking space including chrome coated warming rack
PRIMARY COOK SPACE	295 sq-in / 1,903 sq cm primary cooking space
THERMOMETER	Deluxe Accu-Temp™ thermometer
IGNITION	Sure-Lite™ electronic ignition system
COOK BOX	Therma-Cast™ aluminum oven with stainless steel lid wrap
PEDESTAL	Black powder-coat steel frame with black painted insert
SIDE SHELVES	Durable resin fold-down side shelves
HANDLE	Durable stainless steel handle with hand grip
WHEELS	Two large 6-in / 15.2 cm crack-proof wheels
CONSTRUCTION	Rust resistant zinc coated steel components
FINISH	Premium powder-coat paint finish on pedestal

CAST IRON GRIDS



CAST ALUMINUM COOK BOX



TANK HOLDER



STAINLESS STEEL TUBE BURNERS



ELECTRONIC IGNITION



DURABLE RESIN SIDE SHELVES



STAINLESS STEEL FLAV-R-WAVES™



SENSI-TOUCH™ CONTROL KNOBS



FOLD DOWN SHELVES





On-The-Go.

The Porta-Chef™ Series

Grilling on-the-go has never been easier and more convenient than with the Broil King® Porta-Chef™ series. These portable grills come with durable cast aluminum cook boxes to retain the heat for even cooking. Whatever model you choose, the Porta-Chef™ series is designed for on-the-go performance and great results.



* Not available in USA



PORTA-CHEF™ STANDARD FEATURES

COOKING GRIDS	Cast iron cooking grid(s)
FLAVOR SYSTEM	Stainless steel Flav-R-Wave™ cooking system
HEAT CONTROL	Linear-Flow™ valve(s) with 180° Sensi-Touch™ control
THERMOMETER	Accu-Temp™ thermometer
IGNITION	Sure-Lite™ electronic ignition system
COOK BOX	Therma-Cast™ aluminum oven with stainless steel lid wrap
HANDLE	Stylish and durable stainless steel lid handle
CONSTRUCTION	Rust resistant zinc coated steel components
FINISH	Premium powder-coat paint finish



PORTA-CHEF™ 320 FEATURES

PERFORMANCE	18,000 BTU main burner output
BURNERS	Three stainless steel tube burners
TOTAL COOK SPACE	430 sq-in / 2,774 sq cm total cooking space including chrome coated warming rack
PRIMARY COOK SPACE	295 sq-in / 1,903 sq cm primary cooking space
SHELVES	Durable resin fold-down side shelves
STORAGE	Detachable snap-in legs
FUEL	QCC1 hose connection for use with a 5, 10 or 20 lb propane tank

SEE PAGE 114 - 64001 PORTA-CHEF™ TOOL KIT





PORTA-CHEF™ 320 CART

CONSTRUCTION	Rigid steel cart
FINISH	Premium black powder-coat paint finish
WHEELS	Two large 7-in / 17.8 cm crack-proof wheels
ATTACHMENTS	Quick-Mount™ system



* Not available in USA

PORTA-CHEF™ AT220 FEATURES

PERFORMANCE	16,000 BTU main burner output
BURNERS	Two stainless steel tube burners
TOTAL COOK SPACE	348 sq-in / 2,245 sq cm total cooking space including chrome coated warming rack
PRIMARY COOK SPACE	220 sq-in / 1,419 sq cm primary cooking space
WHEELS	Two large 7.5-in / 19 cm rubber coated all-terrain wheels
STORAGE	Fold-down spring assisted X-Frame™ system
FUEL	For use with 1 lb propane tank; also includes adapter hose for use with a 5, 10 or 20 lb propane tank

PORTA-CHEF™ STANDARD FEATURES

FLAVOR SYSTEM	Stainless steel Flav-R-Wave™ cooking system
HEAT CONTROL	Linear-Flow™ valve(s) with 180° control
THERMOMETER	Accu-Temp™ thermometer
COOK BOX	Therma-Cast™ aluminum oven with stainless steel lid wrap
STORAGE	Detachable snap-in legs
CONSTRUCTION	Rust resistant zinc coated steel components
FINISH	Premium powder-coat paint finish



PORTA-CHEF™ 120 FEATURES

PERFORMANCE	14,000 BTU main burner output
BURNERS	One stainless steel tube burner
COOKING GRIDS	Porcelain coated cast iron cooking grid
TOTAL COOK SPACE	348 sq-in / 2,245 sq cm total cooking space including chrome coated warming rack
PRIMARY COOK SPACE	220 sq-in / 1,419 sq cm primary cooking space
IGNITION	Sure-Lite™ electronic ignition system
HANDLE	Stylish and durable stainless steel lid handle
SHELVES	Removable resin side shelves
FUEL	QCC1 hose connection for use with a 5, 10 or 20 lb propane tank





PORTA-CHEF™ STOVE FEATURES

PERFORMANCE	17,000 BTU main burner output
BURNERS	Two top-ported cast iron wind-proof burners
STOVE TOP GRID	Porcelain coated steel wire grid
STOVE TOP SPACE	284 sq-in / 1,832 sq cm total stove top space
IGNITION	Sure-Lite™ push button ignition system
HANDLE	Stylish and durable resin lid handle
LEVELING	Built-in level with adjustable leg levelers
FUEL	For use with 1 lb propane tank; also includes adapter hose for use with a 5, 10 or 20 lb propane tank



PORTA-CHEF™ 320 | 430 SQ-IN TOTAL GRILLING AREA

CHROME-COATED STEEL WARMING RACK - 135 SQ INCHES



CAST IRON COOKING GRIDS - 295 SQ INCHES



PORTA-CHEF™ AT220/120 | 348 SQ-IN TOTAL GRILLING AREA

CHROME-COATED STEEL WARMING RACK - 128 SQ INCHES



CAST IRON COOKING GRIDS - 220 SQ INCHES



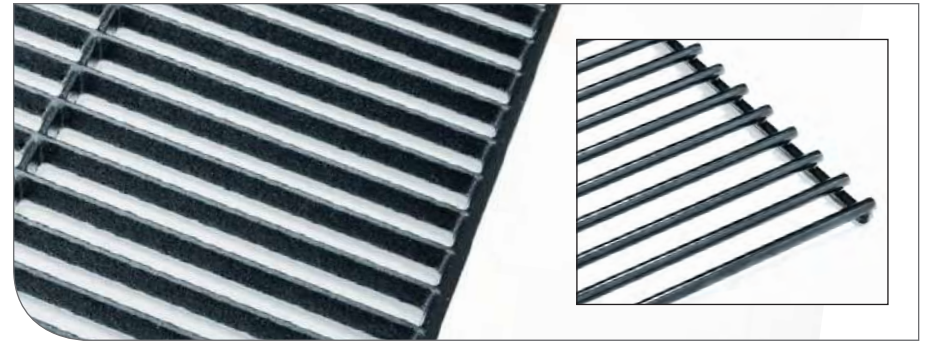
PORTA-CHEF™ STOVE | 255 SQ-IN TOTAL AREA

PORCELAIN-COATED STEEL GRID



CAST IRON GRIDS - 320 | AT220 | 120

WIRE GRID - STOVE



STAINLESS STEEL TUBE BURNER - 320 X 3 | AT220 X 2 | 120



WIND-PROOF CAST IRON BURNERS - STOVE



STAINLESS STEEL FLAV-R-WAVE™



ELECTRONIC IGNITION



DURABLE RESIN SIDE SHELVES



CAST ALUMINUM COOK BOX



PUSH BUTTON IGNITION



TOOL HOOKS



DRINK / BOTTLE HOLDERS



180 DEGREE CONTROL VALVES



DURABLE STEEL SNAP-IN LEGS





ACCU-TEMP™ THERMOMETER



PROPANE TANK HOLDER



FOLD DOWN X-FRAME



LEG ADJUSTERS / INTEGRATED LEVEL



PROPANE ADAPTER



ALL-TERRAIN WHEELS



PORTA-CHEF™ 320 CART



STEEL SIDE SHELF





Authentic.

The Keg Series

Expand your grilling experience and enjoy true cooking performance with authentic barbecue flavor. The patented Broil King® Keg is an innovative charcoal grill designed to keep the heat in creating a very efficient, thermal convection-style oven that delivers superior cooking performance.



KEG STANDARD FEATURES

CONSTRUCTION	Insulated double-walled steel body
COOKING CHAMBER	Rust resistant porcelain coated cooking chamber
COOKING GRID	Heavy-duty cast iron cooking grid
HEAT CONTROL	Cast iron upper damper / Cast aluminum Roto-Draft™ lower damper
THERMOMETER	Deluxe Accu-Temp™ thermometer
HANDLES	Stylish and durable resin handles with built-in bottle openers
LOCK	Latch and lock lid mechanism



KEG 5000 FEATURES

TOTAL COOK SPACE	480 sq-in / 3,097 sq cm total cooking space including swing-out chrome cooking rack
PRIMARY COOK SPACE	280 sq-in / 1,806 sq cm primary cooking space
SHELVES	Removable resin shelves with integrated tool hooks
STAND	Durable steel construction with black paint finish
WHEELS	Two large 8-in / 20.3 cm crack-proof wheels
FINISH	High quality metallic charcoal paint finish
PORTABILITY	Trailer hitch compatible - KA5532 adapter





KEG 2000 FEATURES

TOTAL COOK SPACE	280 sq-in / 1,806 sq cm primary cooking space
STAND	Durable steel construction with black paint finish
FINISH	High quality black paint finish



* Keg not included

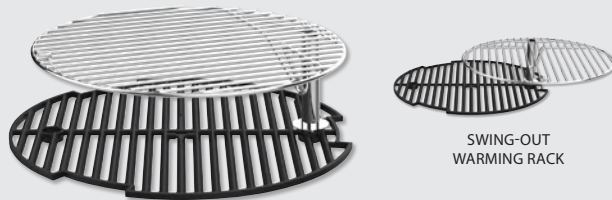
KEG CABINET FEATURES

Turn your Broil King® Keg into a complete outdoor kitchen. The durable stainless steel work surface gives you the space you need to prepare food right at the grill. Sturdy doors and handles provide access to ample storage space for grilling necessities. The pull-out tray is perfect for storing bags of charcoal or wood chips and chunks.

The heavy-duty steel cabinet and base is finished with a premium powder-coat paint for long lasting durability. The grill center comes complete with four durable resin casters for easy maneuverability and two Level-Q™ leg levelers on the front to quickly and firmly stabilize your Keg™.

KEG™ 5000 | 480 SQ-IN TOTAL GRILLING AREA

STAINLESS STEEL WARMING RACK - 200 SQ INCHES



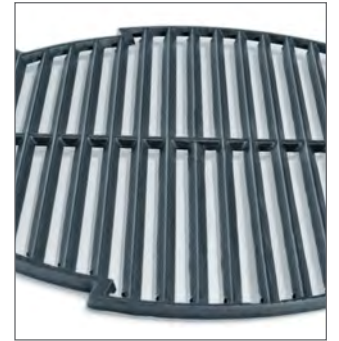
CAST IRON COOKING GRID - 280 SQ INCHES

KEG™ 2000 | 280 SQ-IN TOTAL GRILLING AREA



CAST IRON COOKING GRID - 280 SQ INCHES

CAST IRON GRID



DOUBLE-WALL STEEL CONSTRUCTION



TRAILER HITCH COMPATIBLE



CAST IRON DAMPER



ROTO-DRAFT™ DAMPER



INTEGRATED TOOL HOOKS



REMOVABLE ASH CONTAINER



REMOVABLE SIDE SHELVES



LATCH AND LOCK SYSTEM



DURABLE RESIN HANDLES



DURABLE STEEL BASE



SWING-OUT CHROME COOKING RACK





Flavor.

The Pellet™ Grill Series

With just a simple touch of a dial you can smoke brisket or ribs, bake a pizza, sear steak to perfection, rotisserie cook your favorite roast, and everything in between. Fueled by 100% natural wood pellets, your food gets infused with great smoky flavor. The easy-to-use digital control display will maintain the temperature from low and slow 225°F to a searing 600°F. Constructed with heavy-gauge steel, these durable performance grills are built to last. Introducing our premium line of Broil King® Pellet grills: designed for ultimate cooking versatility and great flavor.



Get ready for
amazing flavor
with just a
simple touch
of a dial.



You're in Control.

Pellet™ Digital Control Display



Smoke



Bake



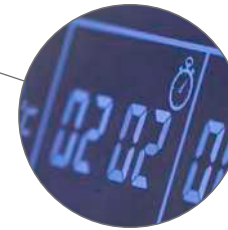
Grill

Three convenient quick-set buttons

Smoke = 225°F

Bake = 350°F

Grill = 600°F



Timer and stopwatch

Program and set the timer for the perfect doneness



Two deluxe meat probes

Monitor the internal temperature of your food



Easy adjust temp control

Dial the exact temperature for amazing results



Extra large steel hopper

Holds up to 22-lbs (9 kg) of pellets



Handy Pellet App

Control what you're cooking from your smart phone

PELLET™ PRO STANDARD FEATURES

CONSTRUCTION	2 mm / 14 gauge steel construction
COOKING GRIDS	Heavy-duty cast iron cooking grids
LID	Double-wall with oven-grade gasket
COOKING AREA	Durable steel cooking chamber
DRIP TRAY	Removable stainless steel drip tray
ASH COLLECTOR	Removable ash collector
GREASE MANAGEMENT	Removable, hidden grease tray with disposable liners
AGITATOR	Burn pot agitator for easy clean out
CHIMNEY	Large diameter steel chimney with Roto-Draft™ damper
SIDE SHELF	Removable stainless steel side shelf
BOTTOM SHELF	Durable steel bottom shelf
HANDLE	Stylish and durable stainless steel handle
STAND	Four durable steel legs with two leg levelers
WHEELS	Two large 8-in / 20.3 cm crack-proof wheel
BOTTLE OPENER	Integrated bottle opener on side shelf
FINISH	Durable high-heat paint finish - 600°C / 1,000°F



PELLET™ XL PRO FEATURES

TOTAL COOK SPACE	825 sq-in / 5,323 sq cm total cooking space including porcelain coated warming rack
PRIMARY COOK SPACE	625 sq-in / 4,032 sq cm primary cooking space
ROTISSERIE KIT	Stainless steel spit rod and forks with electric motor
PELLET HOPPER	Steel hopper holds up to 22 lbs of pellets
DIGITAL CONTROLLER	Dial-design for easy and precise temperature
SMART-TOUCH	Preset temperature buttons - Smoke Roast Grill
ELECTRONIC PROBES	Two electronic meat probes
WIFI / BLUETOOTH™	Broil King® Pellet Grilling App



PELLET™ 500 PRO FEATURES

TOTAL COOK SPACE	630 sq-in / 4,065 sq cm total cooking space including porcelain coated warming rack
PRIMARY COOK SPACE	500 sq-in / 3,226 sq cm primary cooking space
ROTISSERIE KIT	Stainless steel spit rod and forks with electric motor
PELLET HOPPER	Steel hopper holds up to 22 lbs of pellets
DIGITAL CONTROLLER	Dial-design for easy and precise temperature
SMART-TOUCH	Preset temperature buttons – Smoke Roast Grill
ELECTRONIC PROBES	Two electronic meat probes
WIFI / BLUETOOTH™	Broil King® Pellet Grilling App



PELLET™ STANDARD FEATURES

CONSTRUCTION	1.5 mm / 16 gauge steel construction
COOKING GRIDS	Cast iron cooking grids
COOKING AREA	Durable steel cooking chamber
DRIP TRAY	Removable stainless steel drip tray
ASH COLLECTOR	Removable ash collector
GREASE MANAGEMENT	Removable, hidden grease tray with disposable liners
AGITATOR	Burn pot agitator for easy clean out
BOTTOM SHELF	Durable steel bottom shelf
HANDLE	Stylish and durable stainless steel handle
STAND	Four durable steel legs with two leg levelers
WHEELS	Two large 8-in / 20.3 cm crack-proof wheel
BOTTLE OPENER	Integrated bottle opener on shelf handle
FINISH	Durable high-heat paint finish - 600°C / 1,000°F



PELLET™ 550 FEATURES

TOTAL COOK SPACE	750 sq-in / 4,839 sq cm total cooking space including porcelain coated warming rack
PRIMARY COOK SPACE	550 sq-in / 3,548 sq cm primary cooking space
PELLET HOPPER	Steel hopper holds up to 18 lbs of pellets
DIGITAL CONTROLLER	Push-button design for precise temperature
SMART-TOUCH	Preset temperature buttons - Smoke Roast Grill
ELECTRONIC PROBES	Two electronic meat probes
WIFI / BLUETOOTH™	Broil King® Pellet Grilling App



PELLET™ 440 FEATURES

TOTAL COOK SPACE	570 sq-in / 3,677 sq cm total cooking space including porcelain coated warming rack
PRIMARY COOK SPACE	440 sq-in / 2,839 sq cm primary cooking space
PELLET HOPPER	Steel hopper holds up to 18 lbs of pellets
DIGITAL CONTROLLER	Push-button design for precise temperature
SMART-TOUCH	Preset temperature buttons – Smoke Roast Grill
ELECTRONIC PROBES	Two electronic meat probes
WIFI / BLUETOOTH™	Broil King® Pellet Grilling App



Two deluxe meat probes

Monitor the internal temperature of your food

Timer and stopwatch

Program and set the timer for the perfect doneness



Smart-Touch Control System

Easy-access button control with convenient preset temperatures smoking (225°F), baking (350°F) and searing (600°F).



Smoke



Bake



Grill

PELLET™ XL | 825 SQ-IN TOTAL GRILLING AREA

PORCELAIN-COATED STEEL WARMING RACK - 200 SQ INCHES



CAST IRON COOKING GRIDS - 625 SQ INCHES



PELLET™ 500 | 630 SQ-IN TOTAL GRILLING AREA

PORCELAIN-COATED STEEL WARMING RACK - 130 SQ INCHES



CAST IRON COOKING GRIDS - 500 SQ INCHES



PELLET™ 550 | 750 SQ-IN TOTAL GRILLING AREA

PORCELAIN-COATED STEEL WARMING RACK - 200 SQ INCHES



CAST IRON COOKING GRIDS - 550 SQ INCHES

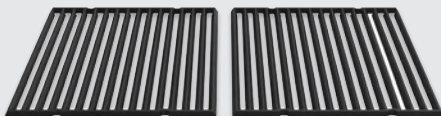


PELLET™ 440 | 570 SQ-IN TOTAL GRILLING AREA

PORCELAIN-COATED STEEL WARMING RACK - 130 SQ INCHES



CAST IRON COOKING GRIDS - 440 SQ INCHES



CAST IRON GRIDS



LOCKS IN THE HEAT



HEAVY-DUTY CONSTRUCTION



RETAINS THE HEAT



LARGE CRACK-PROOF WHEELS



LEVELING FEET



LARGE PELLET HOPPER



ELECTRONIC MEAT PROBES



REMOVABLE DRIP TRAY



REMOVABLE ASH COLLECTOR



HEAT INDUCTION FAN



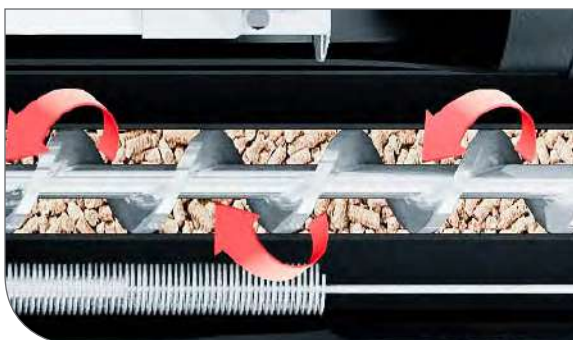
BURN POT AGITATOR



STAINLESS STEEL ROTISSERIE KIT (XL & 500 MODELS)



SOLID-CORE AUGER WITH HEAVY-DUTY MOTOR



3-INCH STAINLESS STEEL BURN POT





Southern.

The Smoke™ Grill Series

Styled after traditional southern smokers, these barrel smokers and grills are exceptionally well crafted. Thick 2mm/14 gauge steel retains heat for precise temperature control. The Smoke™ offset and grills are must haves for aspiring pit masters who enjoy authentic, smokehouse grilling.



SMOKE™ GRILL STANDARD FEATURES

CONSTRUCTION	2 mm / 14 gauge steel construction
COOKING GRIDS	Heavy-duty cast iron cooking grids
HEAT CONTROL	Cast aluminum Roto-Draft™ dampers
COOKING AREA	Durable steel cooking chamber(s)
THERMOMETER	Deluxe Accu-Temp™ thermometer
ASH TRAYS	Removable stainless steel ash trays
CHIMNEY	Large diameter steel chimney with Roto-Draft™ damper
FRONT SHELF	Removable steel front shelf with integrated tool hooks
BOTTOM SHELF	Durable steel bottom shelf
SIDE DOORS	Steel access doors with stainless steel handles
HANDLES	Stylish and durable stainless steel handles
STAND	Four durable steel legs with two leg levelers
WHEELS	Two large 8-in / 20.3 cm crack-proof wheel
BOTTLE OPENER	Chrome plated steel bottle opener
FINISH	Durable high-heat paint finish



SMOKE™ OFFSET 500

SMOKE™ OFFSET XL FEATURES

TOTAL COOK SPACE	1,000 sq-in / 6,452 sq cm total cooking space including porcelain coated warming rack and offset chamber
PRIMARY COOK SPACE	625 sq-in / 4,032 sq cm primary cooking space
INTERNAL DAMPER	Fully adjustable internal damper
CHARCOAL TRAYS	Two dual-purpose smoke diffusing charcoal trays

SMOKE™ OFFSET 500 FEATURES

TOTAL COOK SPACE	805 sq-in / 5,194 sq cm total cooking space including porcelain coated warming rack and offset chamber
PRIMARY COOK SPACE	500 sq-in / 3,226 sq cm primary cooking space



SMOKE™ GRILL 500

SMOKE™ GRILL XL FEATURES

TOTAL COOK SPACE	825 sq-in / 5,323 sq cm total cooking space including porcelain coated warming rack
PRIMARY COOK SPACE	625 sq-in / 4,032 sq cm primary cooking space
CHARCOAL TRAYS	Two dual-purpose smoke diffusing charcoal trays

SMOKE™ GRILL 500 FEATURES

TOTAL COOK SPACE	630 sq-in / 4,065 sq cm cooking space including porcelain coated warming rack
PRIMARY COOK SPACE	500 sq-in / 3,226 sq cm primary cooking space



DIRECT GRILLING

Fill the trays with charcoal to create a direct heat source for grilling steak, chicken and vegetables.



INDIRECT GRILLING

Fill the small chamber with charcoal and wood to smoke meat like ribs, brisket and pulled pork.

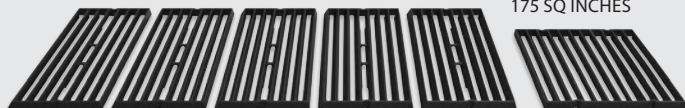
OFFSET XL | 1,000 SQ-IN TOTAL GRILLING AREA

PORCELAIN-COATED STEEL WARMING RACK - 200 SQ INCHES



CAST IRON GRIDS - 625 SQ INCHES

175 SQ INCHES



OFFSET 500 | 805 SQ-IN TOTAL GRILLING AREA

PORCELAIN-COATED STEEL WARMING RACK - 130 SQ INCHES



CAST IRON GRIDS - 500 SQ INCHES

175 SQ INCHES



GRILL XL | 825 SQ-IN TOTAL GRILLING AREA

PORCELAIN-COATED STEEL WARMING RACK - 200 SQ INCHES



CAST IRON COOKING GRIDS - 625 SQ INCHES



GRILL 500 | 630 SQ-IN TOTAL GRILLING AREA

PORCELAIN-COATED STEEL WARMING RACK - 130 SQ INCHES



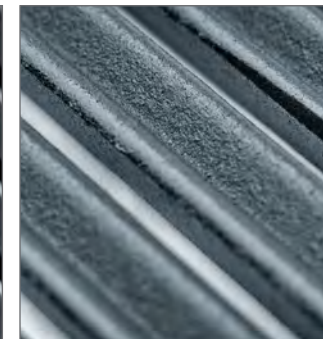
CAST IRON COOKING GRIDS - 500 SQ INCHES



CAST IRON GRIDS - TWO SIDED



GROOVED SIDE



HEAVY-DUTY CONSTRUCTION



2MM-GAUGE STEEL



LARGE CRACK-PROOF WHEELS



LEVELING FEET



ROTO-DRAFT™ DAMPER



ROTO-DRAFT™ DAMPER



DURABLE STEEL BOTTOM SHELF



EASY-ACCESS CHARCOAL TRAYS



REMOVABLE STEEL SHELF



ACCESSORY HOOKS



STAINLESS STEEL ASH TRAYS



ACCU-TEMP™ THERMOMETER



BOTTLE OPENER





Weekend.

The Smoke™ Cabinet Series

Broil King®'s Smoke™ cabinet smokers are designed for the weekend griller that loves great smoky flavor. These smokers feature a double-walled body and doors for superior heat control and long lasting durability. Cast aluminum Roto-Draft™ dampers regulate the temperature for exceptional results. Four stainless steel racks provide lots of room for ribs, fish, poultry or anything you want to smoke. Available in propane, natural gas, or charcoal, Broil King®'s Smoke™ cabinet smokers are engineered for amazing results.

Broil King
SMOKE



SMOKE™ CABINET STANDARD FEATURES

CONSTRUCTION	Double-walled steel construction
CABINET TOP	Durable cast aluminum
COOKING GRIDS	Four stainless steel cooking grids
TOTAL COOK SPACE	770 sq-in / 4,968 sq cm total cooking space
COOKING CAPACITY	Four cubic feet
HEAT CONTROL	Cast aluminum Roto-Draft™ dampers
THERMOMETER	Deluxe Accu-Temp™ thermometer
SMOKER TRAY	Extra large stainless steel smoker tray
WATER PAN	Extra large stainless steel water pan
HANDLES	Three stylish and durable resin handles
DOORS	Two steel doors with gaskets and premium latch system
STAND	Four steel legs with leveling feet
WHEELS	Two rear easy-move wheels
BOTTLE OPENER	Chrome plated steel bottle opener
RIB RACK	Adjustable multi-purpose rib/roast rack
MEAT HOOKS	Sixteen stainless steel meat hooks
TOOL HOOKS	Four sturdy chrome-plated tool hooks
FINISH	Durable high-heat paint finish



SMOKE™ VERTICAL GAS FEATURES

PERFORMANCE	15,000 BTU main burner output
BURNER	One stainless steel burner
IGNITION	Sure-Lite™ push button ignition system





SMOKE™ VERTICAL CHARCOAL FEATURES

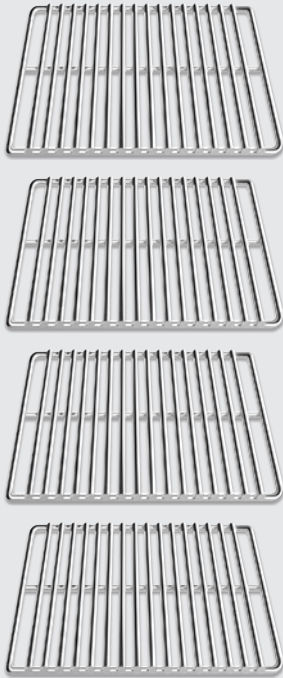
CHARCOAL TRAY	Stainless steel charcoal tray
---------------	-------------------------------



Infuse
food
with
great
smoky
flavor.

CABINET | 770 SQ-IN TOTAL GRILLING AREA

FOUR STAINLESS STEEL GRIDS



+



RIB AND ROAST RACK

STAINLESS STEEL GRIDS



6MM THICK



STAINLESS STEEL BURNER



15,000 BTU



DURABLE CONSTRUCTION



OVEN-GRADE GASKET



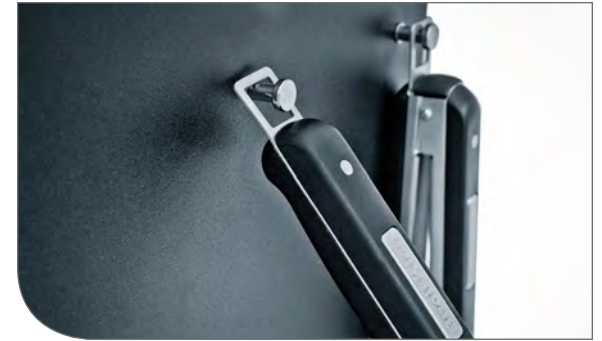
180 DEGREE CONTROL



ELECTRONIC IGNITION



INTEGRATED TOOL HOOKS



ROTO-DRAFT™ DAMPERS



FOLD-DOWN DRIP TRAY



STAINLESS STEEL WATER PAN



HEAVY-DUTY CHARCOAL TRAY



LEG LEVELERS AND WHEELS



ADJUSTABLE LATCH SYSTEM





Do More.

Premium Grilling Accessories

When you grill you're embracing a lifestyle of delicious meals, casual get togethers, and the great outdoors. Grilling invites you outdoors, allowing you to spend more time with family and friends. Our premium grilling accessories will transform your grill into the ultimate entertaining appliance. From everyday essentials to sought after specialties, Broil King® has whatever you need.



Cook More.

Woks and toppers

69712 | FLAT TOPPER

DIMENSIONS	12.8-in x 18.8-in x 2.1-in 32.5 cm x 47.7 cm x 5.3 cm
------------	---



Raised perforations resist sticking and create unique sear marks

Ribbing helps prevent heat warping

Durable stainless steel

Oversized stainless steel handles with embossed Broil King® logo

69720 | GRILL TOPPER

MATERIAL	Stainless steel
DESIGN	Large, perforated, rigid contoured surface
DIMENSIONS	18.6in x 11.5in 47.2 cm x 29 cm



69820 | GRILLING WOK

MATERIAL	Stainless steel
DESIGN	Rounded corners, rigid perforated surface
DIMENSIONS	15.2-in x 12.8-in x 3-in 38.6 cm x 32.5 cm x 7.6 cm



Unleash your inner outdoor chef.



69470 | CAST FAJITA SET

MATERIAL	Cast iron
DESIGN	Bamboo base and silicone handle cover
DIMENSIONS	17.3-in x 7.7-in 43.9 cm x 19.6 cm



69710 | CAST GRILLING WOK

CONSTRUCTION	Porcelain coated cast iron
DESIGN	Easy to clean, great heat retention
DIMENSIONS	16.9-in x 14.5-in x 4.5-in 43 cm x 37.6 cm x 11.9 cm



69122 | NARROW GRIDDLE

MATERIAL	3 mm stainless steel
DESIGN	Space saving, great for searing
DIMENSIONS	14.6-in x 6.4-in x 1.6-in 37.2 cm x 16.2 cm x 4.1 cm



69722 | NARROW TOPPER

MATERIAL	Stainless steel
DESIGN	Square raised perforations, use with 60745 grid lifter
DIMENSIONS	14.6-in x 6.3-in x .7-in 37 cm x 16 cm x 1.8 cm



69160 | GRILLING STEEL

MATERIAL	9.8-lbs 4.4-kg of carbon steel
DESIGN	Heavy, durable, amazing heat retention
DIMENSIONS	11-in x 13-in 27.9 cm x 33 cm



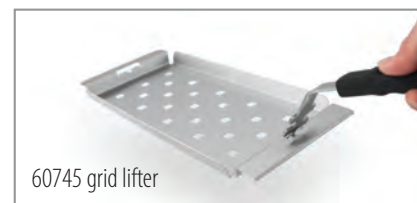
69818 | DEEP DISH GRILL WOK

MATERIAL	Stainless steel
DESIGN	Oversized handles, raised square perforations
DIMENSIONS	16.6-in x 9.8-in x 3.2-in 42.2 cm x 24.6 cm x 8 cm



69822 | NARROW WOK

MATERIAL	Stainless steel
DESIGN	Square raised perforations, use with 60745 grid lifter
DIMENSIONS	14.6-in x 6.3-in x 3-in 37 cm x 16.1 cm x 8.2 cm



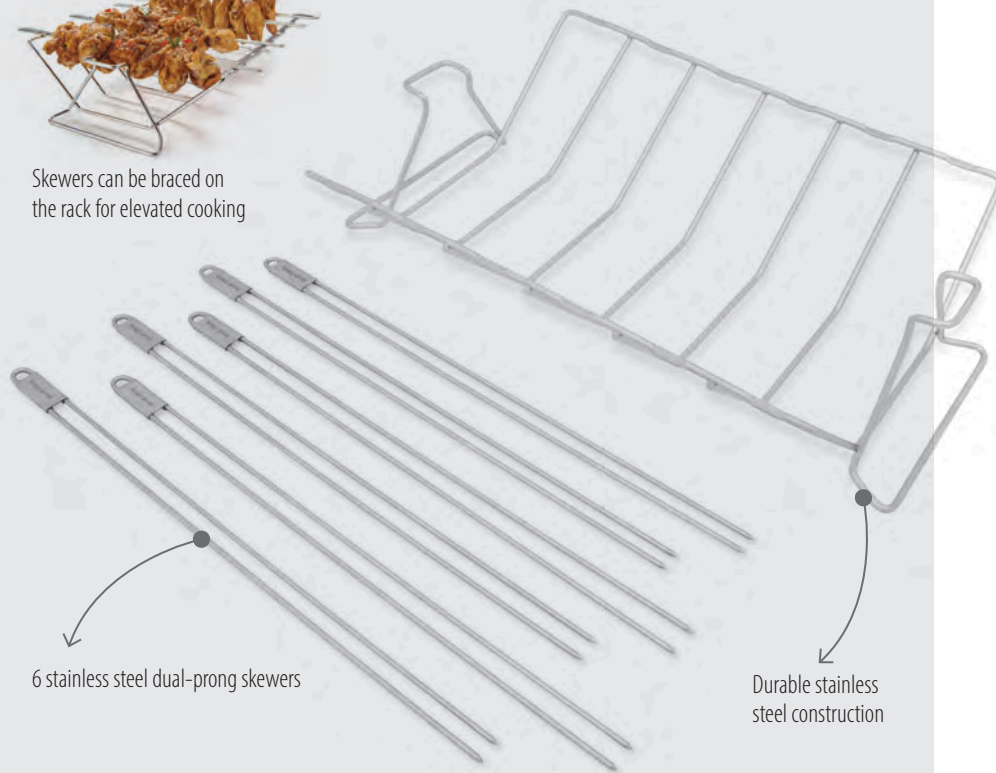
Create More. Skewers

64233 | MULTI RACK AND SKEWER KIT

DIMENSIONS 15.3-in x 13.8-in x 3.7-in | 39 cm x 35 cm x 9.5 cm



Skewers can be braced on the rack for elevated cooking



6 stainless steel dual-prong skewers

Durable stainless steel construction



Reversible Rack

One side is perfect for roasts and the other side has slots for ribs



69138 | NARROW KEBAB RACK



MATERIAL	Stainless steel
DESIGN	Dual-pronged skewers, raised rack, four-position holder
RACK DIMENSIONS	11.7-in x 9.7-in x 3-in 29.7 cm x 22.9 cm x 7.6 cm
SKEWER DIMENSIONS	12-in 30.5 cm - set of four skewers



64045 | DUAL PRONG SKEWERS

MATERIAL	2 mm stainless steel
DESIGN	Dual prong
DIMENSIONS	14-in 35.6 cm - set of four



64049 | GRILLING SKEWERS

MATERIAL	3 mm stainless steel wire
DESIGN	Dual prong
DIMENSIONS	12-in 30.5 cm - set of four



Get ready to do more with your grill.



Roast More.

Roasters and racks

69615 | CAST RIB ROASTER

DIMENSIONS 17.6-in x 7-in x 7-in | 44.7 cm x 17.7 cm x 17.7 cm



63106 | ROASTING PAN



MATERIAL	Stainless steel
DESIGN	Roasting pan, drip pan, easy to clean
DIMENSIONS	13.25-in x 10-in x 1.5-in 33.7 cm x 25.4 cm x 3.8 cm



69819 | ROASTING BASKET

MATERIAL	Stainless steel
DESIGN	Micro perforated basket, roast small items easily
DIMENSIONS	17.2-in x 10.9-in x 4.1-in 43.8 cm x 27.8 cm x 10.5 cm



69616 | FOIL RIB ROASTER

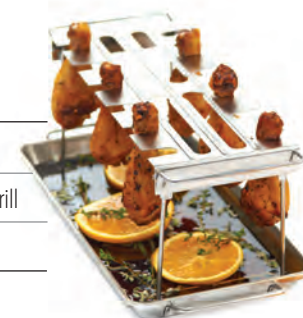
MATERIAL	Thick reusable foil
DESIGN	Dimpled lid, holds ribs upright, cooks in far less time
DIMENSIONS	18.1-in x 7.6-in x 6.3-in 46 cm x 19.3 cm x 16 cm



Use with or without 69615 Cast Rib Roaster

64152 | WING RACK

MATERIAL	Stainless steel
DESIGN	Pan and folding wing rack, space saving on the grill
DIMENSIONS	15-in x 7-in x 5.6-in 38 cm x 17.8 cm x 14.2 cm



62602 | RIB RACK AND ROAST SUPPORT

MATERIAL	Stainless steel, 10 mm and 5 mm
DESIGN	Accommodates 7 racks of ribs, holds roasts too
DIMENSIONS	15.2-in x 8.6-in x 4-in 38.5 cm x 21.8 cm x 10.2 cm



65070 | PREMIUM GRILL BASKET

MATERIAL	Stainless steel wire, soft resin handle
DESIGN	Grill or fireside, detachable handle, 3 lid positions
DIMENSIONS	22.1-in x 12.4-in x 2.5-in 56.3 cm x 31.5 cm x 6.4 cm



69133 | CHICKEN ROASTER WITH PAN

MATERIAL	Stainless steel
DESIGN	Oversized handles, screw on cup
DIMENSIONS	11.3-in x 9.2-in x 4.8-in 28.7 cm x 23.4 cm x 12.2 cm



69132 | CHICKEN ROASTER

MATERIAL	Stainless steel
DESIGN	Silicone bezel chicken thermometer included
DIMENSIONS	7-in x 8.2-in 17.8 cm x 20.8 cm



Bake More. Everything pizza

69816 | STONE GRILL SET

DIMENSIONS (PEEL) 29.8-in x 13.2-in | 75.6 cm x 33.5 cm

DIMENSIONS (STONE) 15.8-in x 13.3-in x 2-in | 40.1 cm x 33.7 cm x 5 cm



69814 | OVERSIZED GRILLING STONE

MATERIAL Extra thick 3/4-in (1.9 cm) ceramic stone

DESIGN Amazing heat retention, durable ceramic compound

DIMENSIONS 15-in | 28 cm diameter



69800 | PIZZA PEEL

CONSTRUCTION Stainless steel

DESIGN Folding soft-grip handle, large blade

DIMENSIONS 25.5-in x 10.8-in | 64.8 cm x 27.4 cm



It's time to break free from the kitchen.

69805 | MEZZALUNA PIZZA CUTTER

MATERIAL Stainless steel, soft resin grip

DESIGN Large rocking blade, easy to grip

DIMENSIONS 15-in x 4.7-in | 38 cm x 12 cm





Boast More.

The essentials

60975 | GRILLING APRON



61495 | MARINADE INJECTOR

MATERIAL	Stainless steel body and tips, resin chamber & plunger
DESIGN	Diffuser and injector needles
DIMENSIONS	1.5-oz 44 ml capacity



61490 | STAINLESS BASTING SET

MATERIAL	Stainless steel, silicone, resin handles
DESIGN	Silicone brush head heat resistant to 500°F 260°C
DIMENSIONS	Brush: 10-in 25.5 cm Bowl: 250 ml Handle: 3.9-in 10 cm



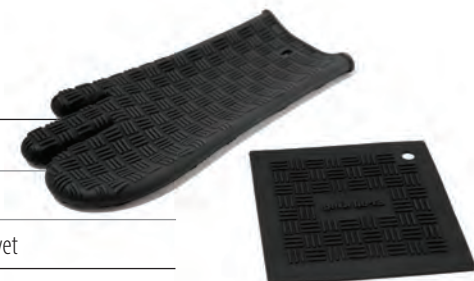
60009 | SIDE SHELF MAT

MATERIAL	Silicone
DESIGN	Protects side shelves from grease and scratches
DIMENSIONS	13.9-in x 10.8-in 35 cm x 27.5 cm



60973 | OVEN MITT AND TRIVET

MATERIAL	Silicone grill mitt and trivet
DESIGN	Heat resistant to 500°F 260°C
DIMENSIONS	One size fits all, one mitt, one trivet



60974 | INSULATED MITT

MATERIAL	Heat resistant aramid exterior with silicone grip
DESIGN	Flexible, high heat resistant glove
DIMENSIONS	One size fits most, one mitt



60528 | LEATHER GRILL MITTS

MATERIAL	Heavy duty leather grilling gloves
DESIGN	Blue accents with a silk screened Broil King® logo
DIMENSIONS	One size fits most, two mitts



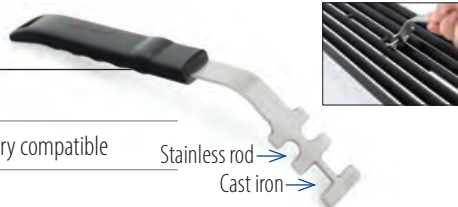
61138 | MINI THERMOMETERS

MATERIAL	Stainless steel probe, silicone bezel
DESIGN	Calibrated for poultry in red and steak in black
DIMENSIONS	Set of four mini thermometers - 2.5-in 6.4 cm



60745 | GRID LIFTER

MATERIAL	Stainless steel, resin handle
DESIGN	Removes cooking grids accessory compatible
DIMENSIONS	10.5-in 26.7 cm



61825 | INSTANT READ THERMOMETER

MATERIAL	Stainless probe, durable resin body, stainless fascia
DESIGN	Fast reading intervals with back lit screen
DIMENSIONS	8-in 20.32 cm



61935 | SIDE TABLE THERMOMETER

MATERIAL	Stainless probes, durable resin body, stainless fascia
DESIGN	Two probes, countdown timer, target temperature
DIMENSIONS	5-in 12.7 cm



60940 | OIL MISTER

MATERIAL	Stainless steel body, resin pump
DESIGN	Non-aerosol mist pump sprayer
DIMENSIONS	7-in x 2-in 17.8 cm x 5 cm



Innovative accessories for amazing results.

60934 | HANDLE MOUNT GRILL LIGHT

MATERIAL	Resin body with elastomer band
DESIGN	Dual LEDs, band fits any Broil King® grill
DIMENSIONS	5-in 12.7 cm



60938 | DELUXE GRILL LIGHT AND TIMER

MATERIAL	Resin body, LCD display
DESIGN	COB light strips with integrated cooking timer
DIMENSIONS	10-in 25.4 cm



990616 | BROIL KING® INSULATED TUMBLER

MATERIAL	Stainless steel with black grip coating
DESIGN	Slide lock spill-resistant resin lid
DIMENSIONS	20 oz (591 ml) capacity



64009 | BOTTLE OPENER

MATERIAL	Stainless steel, resin handle
DESIGN	Fun-sized, turner themed bottle opener
DIMENSIONS	4.7-in 12 cm



68426 | DELUXE CUTTING / SERVING BOARD SET

MATERIAL	Bamboo, resin, silicone feet
DESIGN	Double-sided resin prep board with deep moated bamboo cutting board
DIMENSIONS	12-in x 20-in 30.5 cm x 50.8 cm



64935 | STEAK KNIVES

MATERIAL	High-grade stainless steel, Bakelite handles
DESIGN	Serrated blades with full tang
DIMENSIONS	9.6-in 24.3 cm Set of 4



50990 | THE PERFECT™ STEAK MARINADE

50974 | THE PERFECT™ BBQ SAUCE

50976 | THE PERFECT™ STEAK SPICE RUB

50975 | THE PERFECT™ BBQ SPICE RUB

50978 | THE PERFECT™ KC BBQ SPICE RUB



The Perfect™ way to satisfy the senses.

66009 | PREMIUM UNIVERSAL ELECTRIC MOTOR ROTISSERIE KIT

MATERIAL	Chrome plated steel
DESIGN	Heavy duty spit forks, counter balancing kit, spit rod OEM and universal mounting hardware
DIMENSIONS	33-in 83.8 cm with 6-in (15.2 cm) optional extension



60508 | PREMIUM UNIVERSAL BATTERY MOTOR ROTISSERIE KIT

MATERIAL	Chrome plated steel
DESIGN	Heavy duty spit forks, counter balancing kit, spit rod OEM and universal mounting hardware
DIMENSIONS	33-in 83.8 cm with 6-in (15.2 cm) optional extension



50502 | STAINLESS STEEL MEAT FORKS

MATERIAL	Chrome plated steel forks and locks
DESIGN	Four prongs secure the food - Set of two
DIMENSIONS	4-in 10.2 cm



50500 | STAINLESS STEEL MEGA FORKS

MATERIAL	Stainless steel forks, chrome plated steel locks
DESIGN	Six C-shaped forks, disassemble to clean, multi-position
DIMENSIONS	5-in 12.7 cm



Grill More.

Tools of the trade

64001 | PORTA-CHEF™ TOOL KIT



64004 | IMPERIAL™ GRILL TOOLS

CONSTRUCTION	1.2 mm stainless steel, durable resin handles
DESIGN	Large resin handles with stainless inlays
FEATURES	Turner, locking tong, silicone basting brush and grill brush



64003 | BARON™ GRILL TOOLS

CONSTRUCTION	Durable resin handles and stainless blades
DESIGN	Integrated grime guard, silicone basting brush
FEATURES	Turner, locking tong, basting brush and grill brush



64312 | GRILL TONGS - 3 PACK

CONSTRUCTION	Stainless steel, colored rubber inserts
DESIGN	Colors avoid cross contamination between foods
FEATURES	Red (meat), green (vegetables), blue (fish/seafood)



64013 | BASTING BRUSH

CONSTRUCTION	1.2 mm stainless steel, durable resin handle
DESIGN	Silicone basting head, heat resistant to 500°F 260°C
DIMENSIONS	18-in 45.7 cm



64031 | BARON™ TURNER

CONSTRUCTION	Stainless steel, resin handle
DESIGN	box design shaft for strength
DIMENSIONS	17.5-in 44.5 cm



64030 | BARON™ SUPER FLIPPER

CONSTRUCTION	Stainless steel, resin handle
DESIGN	Extra long blade
DIMENSIONS	17.5-in 44.5 cm



64010 | IMPERIAL™ SUPER FLIPPER

CONSTRUCTION	1.2 mm stainless steel, durable resin handle
DESIGN	Extra long blade, integrated bottle opener
DIMENSIONS	18.9-in 48 cm



64011 | IMPERIAL™ GRILL TURNER

CONSTRUCTION	1.2 mm stainless steel, durable resin handle
DESIGN	Integrated bottle opener
DIMENSIONS	18-in 45.7 cm



64012 | IMPERIAL™ GRILL TONG

MATERIAL	Stainless steel, resin grips
DESIGN	One spatula blade tip, one tong tip, locking tab
DIMENSIONS	18.9-in 48 cm



64032 | BARON™ TONG

MATERIAL	Stainless steel, soft resin grips
DESIGN	One spatula blade tip, one tong tip, locking tab
DIMENSIONS	17.7-in 45 cm



64036 | BARON™ PRECISION TONG

MATERIAL	Stainless steel, soft resin grips
DESIGN	Scalloped tong tips, locking tab
DIMENSIONS	12-in 30.5 cm



Chef inspired,
grilling essentials.

Smoke More.

It's all about flavor

60190 | PREMIUM SMOKER BOX



Fill chambers with Broil King® Pellets



Infuses food with great smoky flavor

63280 | CEDAR GRILLING PLANKS

MATERIAL	100% natural cedar
DESIGN	Two grilling planks - 3/8-in (1cm) thick
DIMENSIONS	7.5-in x 15-in 19 cm x 38 cm



**100%
NATURAL**

63290 | MAPLE GRILLING PLANKS

MATERIAL	100% natural maple
DESIGN	Two grilling planks - 3/8-in (1cm) thick
DIMENSIONS	7.5-in x 15-in 19 cm x 38 cm



63200 | MESQUITE WOOD CHIPS

63220 | HICKORY WOOD CHIPS

63230 | APPLE WOOD CHIPS

DESIGN

DIMENSIONS Available in 3 popular specie



**100%
NATURAL**

60185 | SMOKER BOX

MATERIAL	Stainless steel
DESIGN	Two handles, hinged lid
DIMENSIONS	11.6-in x 3.2-in x 1.3-in 29.5 cm x 8.1 cm x 3.3 cm



Better fuel for better flavor.

The perfect barbecue starts with the right kind of fuel. Broil King's Premium Grilling Pellets are specifically designed to work with the Broil King® Pellet series grills.

Our pellets are 100% natural and contain only premium wood with no fillers, oil additives, or binding agents. Available in a variety of blends, these premium pellets offer optimal cooking performance and great flavor.

Our source woods are mixed before pelletizing, ensuring that each pellet contains the intended blend. This method allows for more repeatable cooking performance with a consistent burn and smoke flavor.

- 63930 | SMOKE MASTER'S BLEND
- 63939 | GRILLER'S SELECT BLEND
- 63920 | 100% HICKORY PELLETS

DESIGN	Varying smoke intensities in 3 popular flavors
DIMENSIONS	20lb bag with zipper seal



- 63946 | PELLET SCOOP

MATERIAL	Stainless steel, resin handle
DESIGN	Slotted-hole design to sift out dust
DIMENSIONS	14-in x 4.8-in 35.5 cm x 12.2 cm



GRILLER'S SELECT BLEND Maple | Oak | Cherry – This pellet blend offers a lighter and slightly sweet smoke, designed to not over-power natural flavors. A great choice as an everyday grilling pellet. Try with beef, poultry, pork, fish, vegetables and pizza.

ITEM # 63939



100% HICKORY PELLETS – The most iconic BBQ flavor. Hickory offers a strong smoke taste, often associated with bacon or smoked ham. This robust smoke works well with large cuts of meats. Try with beef, poultry, pork and hearty vegetables.

ITEM # 63920



SMOKE MASTER'S BLEND Maple | Hickory | Cherry – A selection of pellets popular with competition BBQ champions. This blend offers hints of sweetness combined with a full bodied hickory smoke. Adds a well-balanced smoke taste to grilled foods. Try with beef, poultry and pork.

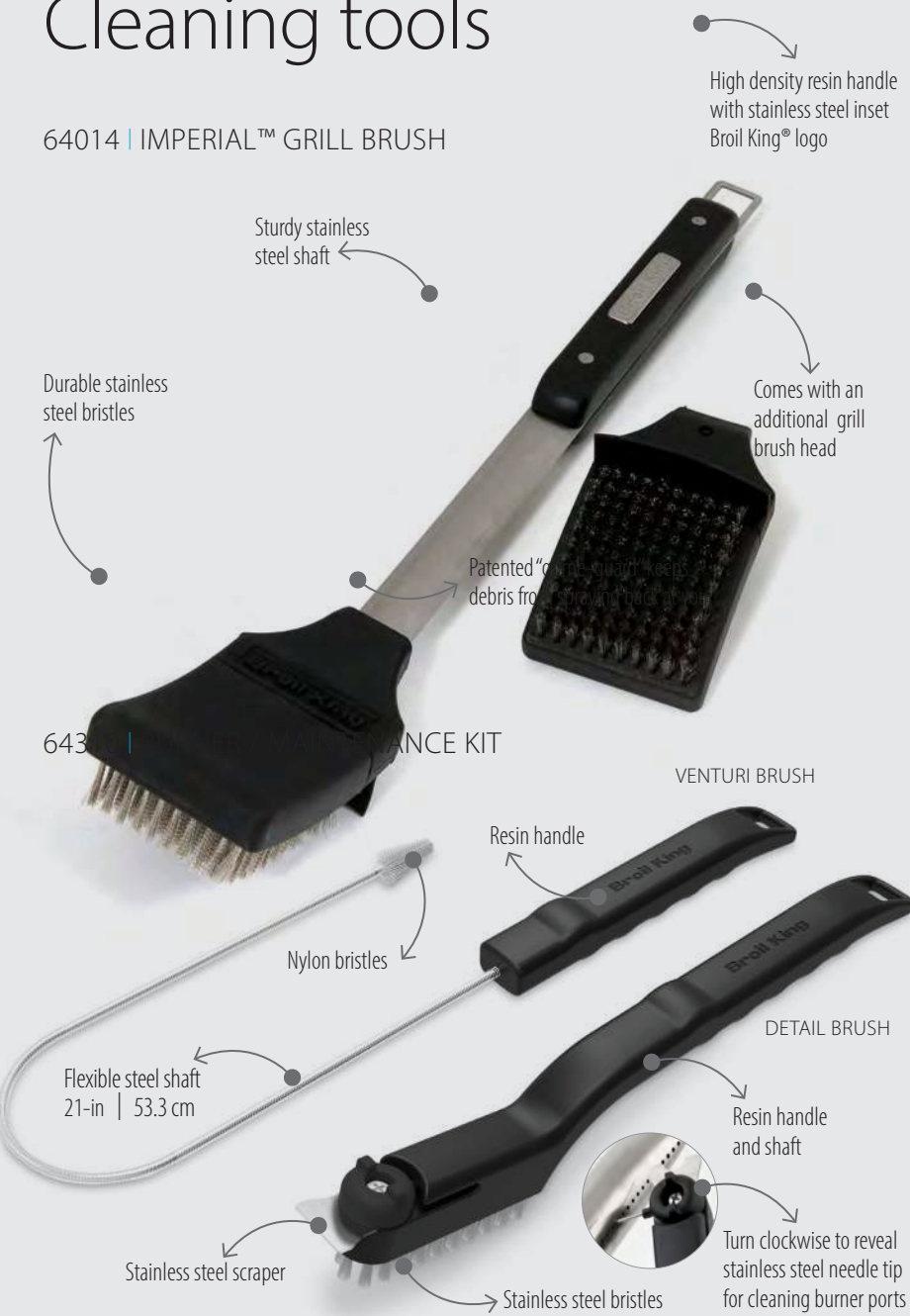
ITEM # 63930



Preserve More.

Cleaning tools

64014 | IMPERIAL™ GRILL BRUSH



65641 | EXTRA WIDE STAINLESS GRILL BRUSH

MATERIAL	Stainless steel bristles, resin handle
DESIGN	Cleans deep into the corners of the grill and between grids
DIMENSIONS	18.8-in x 8-in 47.8 cm x 20.3 cm



65643 | EXTRA WIDE NYLON GRILL BRUSH

MATERIAL	Stiff nylon bristles, resin handle
DESIGN	Cleans deep into the corners of the grill and between grids
DIMENSIONS	18.8-in x 8-in 47.8 cm x 20.3 cm



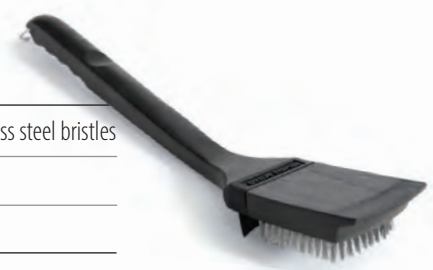
64034 | BARON™ GRILL BRUSH

CONSTRUCTION	Stainless steel bristles, resin handle
DESIGN	Ergonomic handle, integrated grime guard
DIMENSIONS	17.6-in x 3-in 44.7 cm x 7.6 cm



65225 | WOOD HANDLE GRILL BRUSH

CONSTRUCTION	Hardwood handle and durable stainless steel bristles
DESIGN	Grime guard, wooden scraper
DIMENSIONS	18.5-in x 3-in 44.7 cm x 7.6 cm



65335 | WOOD GRILL SCRAPER

CONSTRUCTION	Wood body, stainless steel hanger
DESIGN	Wooden grill scraper with power grip
DIMENSIONS	18-in 45.7 cm



Our 3-Step Cleaning Solution will Keep Your Broil King® Looking Like New

62380 | GRILL AND CASTING CLEANER

CONSTRUCTION	Non-toxic cleaning formula
DESIGN	Easily removes grease, grime and smoke stains
DIMENSIONS	24-oz 710 ml

1



Step 1 – Clean and Degrease the Grill | 62380

Grates: Spray product liberally onto surfaces, and allow product to stand 1-2 minutes. Scrub with a grill brush. Rinse clean with water.

All other Surfaces: Spray directly onto soiled surfaces. Wait 1-2 minutes, then wipe away soil and residue with a clean cloth or sponge. Scrubbing may be necessary on heavily encrusted areas. Wipe clean with wet sponge or cloth. To achieve a brilliant shine on stainless steel, use Broil King® Stainless Steel Cleaner & Polish.



62390 | GRILL REVITALIZER

CONSTRUCTION	Non-toxic cream cleaner for stainless and porcelain
DESIGN	Removes the toughest grime, rust and smoke stains
DIMENSIONS	8-oz 236 ml

2



Step 2 – Revitalize the Stainless Steel | 62390

Apply product directly to cool grill exterior. Rub with a paper towel, sponge, or soft cloth to clean (Avoid abrasive pads or steel wool). Wipe off excess and buff with a clean paper towel or soft cloth. Use regularly to protect and maintain your grill.



62385 | STAINLESS STEEL CLEANER

CONSTRUCTION	Non-toxic cleaning formula
DESIGN	Lightly cleans and restores stainless steel shine
DIMENSIONS	24-oz 710 ml

3



Step 3 – Polish and Protect the Stainless | 62385

Turn nozzle to Spray position and spray lightly on surface to be cleaned. Distribute product evenly over surface with a clean, soft cloth. Wipe away soil and residue in the direction of the surface grain. For heavily soiled areas, repeat as necessary. Buff with a dry cloth for a brilliant, long lasting shine.



Protect More. Quality grill covers



Large molded
rubber handles



Mesh venting
for enhanced
air flow



Hook and loop closures
for a superior fit when
shelves are up or down

Water resistant PVC with a heavy
woven 900D polyester backing
and extra reinforced seams

PREMIUM | EXACT FIT COVERS

ITEM	MODELS
68490	IMPERIAL™ XLS, XL
68492	IMPERIAL™ 590
68490	REGAL™ XLS, XL
68492	REGAL™ 590
68491	REGAL™ 490, 440, 420
68488	BARON™ 590
68487	BARON™ 490, 440, 420
68470	BARON™ 320
68491	SOVEREIGN™ XLS 90, XLS 20
68487	SOVEREIGN™ 90, 20
68487	SIGNET™ 90, 70, 320
68470	MONARCH™ 390, 340, 320
67069	PELLET™ XL
67065	PELLET™ 500



Crafted from water resistant PVC with a heavy woven 900D polyester backing. Premium covers feature mesh venting for enhanced air flow and moisture resistance as well as hook and loop closures for a superior fit. Blue accent stitching adds style to the extra reinforced seams. Molded rubber handles make the cover easy to remove.

KA5536 | PREMIUM KEG CABINET COVER

MATERIAL	900D polyester fade resistant PVC exterior with embroidered Broil King® Keg logo and blue accent stitching
DESIGN	Fits Keg 2000, 4000, 5000



KA5535 | PREMIUM KEG COVER

MATERIAL	900D polyester fade resistant PVC exterior with embroidered Broil King® Keg logo and blue accent stitching
DESIGN	Fits Keg 5000 and 4000 with shelves



SELECT | EXACT FIT COVERS

ITEM	MODELS
67488	BARON™ 590
67487	BARON™ 490, 440, 420
67470	BARON™ 320
67487	SOVEREIGN™ 90, 20
67487	SIGNET™ 90, 70, 320
67470	MONARCH™ 390, 340, 320
67420	GEM™ 320
67420	PORTA-CHEF™ 320, 120
67421	PORTA-CHEF™ AT220
67240	SMOKE™ VERTICAL SMOKER
67050	SMOKE™ OFFSET SMOKER
67060	SMOKE™ CHARCOAL GRILL



Broil King® Select Series covers are crafted from durable and weather resistant PVC outer shell with a 500 x 300D polyester lining. These deluxe covers feature hook and loop closures, polyester handles, and the Broil King® logo screened onto the front.

KA5544 | SELECT KEG COVER

MATERIAL	500 x 300D PVC / Polyester cover
DESIGN	Fits Keg 2000, 4000, 5000 without shelves



EXACT FIT WOK

MATERIAL	Heavy duty enameled cast iron
DESIGN	Sits close to the heat source for high heat sautéing

ITEM	MODELS
69618	IMPERIAL™ / REGAL™
69617	BARON™ / SOVEREIGN™



Sear More.
Exact-fit cast

EXACT FIT GRIDDLES

MATERIAL	Heavy duty enameled cast iron
DESIGN	Reversible cooking surfaces - smooth and ribbed

ITEM	MODELS
11239	IMPERIAL™ XLS, XL, 590
11239	REGAL™ XLS, XL, 590, 490, 440, 420
11242	BARON™ 590, 490, 440, 420, 320
11220	SOVEREIGN™ XLS 90, XLS, 90, 20
11221	SIGNET™ 90, 70, 320
11223	MONARCH™ 390, 340, 320
11237	PORTA-CHEF™ 320, GEM 320
11239	SMOKE™ OFFSET, GRILL, PELLET



Live More.

Keg Accessories

KA5532 | HITCH ADAPTER KIT



KA5527 | MULTI-PURPOSE TOOL

MATERIAL	Stainless steel with resin handle
DESIGN	Lift and adjust cooking grids, warming rack, dampers
DIMENSIONS	18-in 45.7 cm



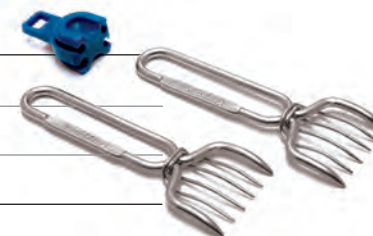
64075 | MEAT SHREDDER TOOL

MATERIAL	Stainless steel fork and shaft
DESIGN	Attaches to drill for easy shredding of meat
DIMENSIONS	13-in 33 cm shaft 5-in 38 cm forks



64070 | MEAT CLAWS

MATERIAL	Stainless steel, silicone holder
DESIGN	Lift, hold, shred
DIMENSIONS	8.3-in x 2.9-in 21.1 cm x 7.4 cm



Now it's time to take the party with you.

KA5545 | COOKING GRATE SET

MATERIAL	Cast iron cooking grid, swing-away chrome wire rack
DESIGN	Added cooking capacity, fits 2000, 3000, 4000, 5000
DIMENSIONS	Grid 18.5-in 47 cm Rack 16-in 40.6 cm



KA5565 | CHARCOAL CADDIE BASKET

MATERIAL	Cast iron
DESIGN	Charcoal management system, easy to refill and replace
DIMENSIONS	14.2-in x 8.5-in x 5.9-in 36.1 cm x 21.6 cm x 15 cm



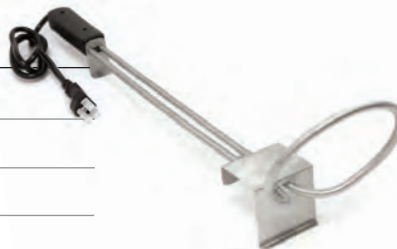
TCF5511 | NATURAL FIRE STARTER

MATERIAL	Natural compressed wood
DESIGN	Strikes like a match, each stick burns for six minutes
DIMENSIONS	12.5-in x 1-in x 4.5-in 6.4 cm x 2.5 cm x 11.4 cm



KA3367 | ELECTRIC CHARCOAL STARTER

MATERIAL	Stainless steel element, resin handle
DESIGN	Designed specifically for kamado grills
DIMENSIONS	18-in 46 cm element



KA5533 | DIFFUSER KIT

MATERIAL	Durable porcelain coated steel
DESIGN	Drip pan, diffuser, elevates the cooking grid
DIMENSIONS	14.8-in x 8.9-in 37.5 cm x 22.5 cm



KA5542 | CAST GRIDDLE

MATERIAL	Cast iron
DESIGN	Reversible - Flat side to sauté, ribbed side to sear
DIMENSIONS	14.8-in x 8.9-in 37.5 cm x 22.5 cm



TCF5505 | HARDWOOD LUMP CHARCOAL

MATERIAL	Natural hardwood lump charcoal
DESIGN	Strikes like a match, each stick burns for six minutes
DIMENSIONS	8.8lb 3.99 kg bag



Better Fuel Makes Better Food! 100% Natural Hardwood Lump Charcoal delivers the ultimate outdoor cooking experience with authentic flavor, unmatched performance, and incredible convenience.

Unlike charcoal briquettes, our Lump Charcoal contains no chemicals, additives, or fillers. You just get that delicious natural flavor of cooking over a real hardwood fire. Hardwood Lump Charcoal lights quicker, burns hotter, and lasts longer than briquettes. Clean up is easier too. With no fillers, our Lump Charcoal produces about 5X less ash.

Broil King® Experience. 2019 Grill Collection

Luxury.
The Imperial™ Series.



IMPERIAL® XLS
957884 LP / 957887 NG



IMPERIAL® XL
957784 LP / 957787 NG



IMPERIAL® 590
958884 LP / 958887 NG

Entertain.
The Regal™ Series.



REGAL® XLS PRO
957344 LP / 957347 NG



REGAL® XL PRO
957244 LP / 957247 NG



REGAL® S590 PRO IR
958944 LP / 958947 NG



REGAL® S590 PRO
958344 LP / 958347 NG



REGAL® 590 PRO
958244 LP / 958247 NG



REGAL® S490 PRO IR
956944 LP / 956947 NG



REGAL® S490 PRO
956344 LP / 956347 NG



REGAL® 490 PRO
956244 LP / 956247 NG



REGAL® S420 PRO
956314 LP / 956317 NG



REGAL® 420 PRO
956214 LP / 956217 NG

Performance.
The Regal™ Commercial Series.



REGAL® S520 C
886114 LP / 886117 NG



REGAL® S420 C
885114 LP / 885117 NG

Everyday. The Baron™ Series.



BARON® S590 PRO IR
923944 LP / 923947 NG



BARON® S590
923584 LP / 923587 NG



BARON® 590
923184 LP / 923187 NG



BARON® S490 PRO IR
922944 LP / 922947 NG



BARON® S490
922584 LP / 922587 NG



BARON® 490
922184 LP / 922187 NG



BARON® S440
922564 LP / 922567 NG



BARON® 440
922164 LP / 922167 NG



BARON® S420
922554 LP / 922557 NG



BARON® 420
922154 LP / 922157 NG



BARON® S320
921554 LP / 921557 NG



BARON® 320
921154 LP / 921157 NG

Signature. The Sovereign™ Series.



SOVEREIGN® XLS90
988844 LP / 988847 NG



SOVEREIGN® XLS20
988814 LP / 988817 NG



SOVEREIGN® 90
987844 LP / 987847 NG



SOVEREIGN® 20
987814 LP / 987817 NG

Classic. The Signet™ Series.



SIGNET® 90
946884 LP / 946887 NG



SIGNET® 320
946854 LP / 946857 NG



SIGNET® 320B
946454 LP / 946457 NG

Style.
The Monarch™ Series.



MONARCH® 390
834284 LP / 834287 NG



MONARCH® 340
834264 LP / 834267 NG



MONARCH® 320
834254 LP / 834257 NG

Compact.
The Gem™ Series.



GEM® 320
814154 LP

Authentic.
The Keg Series.



KEG® 5000
911470



KEG® 2000
911050



KEG® CABINET
911500

On-the-Go.
The Porta-Chef™ Series.



PORTA-CHEF® 320
952654 LP



PORTA-CHEF® CART
902500



PORTA-CHEF® AT220
910854 LP



PORTA-CHEF® 120
950654 LP



PORTA-CHEF® STOVE
920254 LP

Weekend.
The Smoke™ Cabinet Series.



SMOKE® CHARCOAL
923610 CH



SMOKE® GAS
923614 LP / 923617 NG

Flavor.
The Pellet™ Grill Series.



SMOKE® PELLET XL
496051



SMOKE® PELLET 500
495051



SMOKE® PELLET 550
494051



SMOKE® PELLET 440
493051



SMOKE® OFFSET XL
958050



SMOKE® OFFSET 500
955050



SMOKE® GRILL XL
948050



SMOKE® GRILL 500
945050

Southern.
The Smoke™ Grill Series.

